

IHC*easy* SLC30A6/ZNT6 Ready-To-Use IHC Kit

Catalog Number: **KHC2583**

General Information

Sample type:
FFPE tissue

Cited sample type:

Reactivity:
Human, Mouse, Rat

Cited Reactivity:

Assay type:
Immunohistochemistry

Primary antibody type:
Rabbit Polyclonal

Secondary antibody type:
Polymer-HRP-Goat anti-Rabbit

Kit Component

| Component | Size | Concentration |
|--------------------------|--------------------|---------------|
| Antigen Retrieval Buffer | 100 mL | 50× |
| Washing Buffer | 100 mL ×2 | 20× |
| Blocking Buffer | 5 mL | RTU |
| Primary Antibody | 5 mL | RTU |
| Secondary Antibody | 5 mL | RTU |
| Chromogen Component A | 0.2 mL | RTU |
| Chromogen Component B | 4 mL | RTU |
| Signal Enhancer | 5 mL | RTU |
| Counter Staining Reagent | 5 mL | RTU |
| Mounting Media | 5 mL | RTU |
| Control Slide | 1 slide (Optional) | FFPE |
| Datasheet | 1 Copy | |
| Manual | 1 Copy | |

Storage Instructions

All the reagents are stored at 2-8°C. The kit is stable for 6 months from the date of receipt.

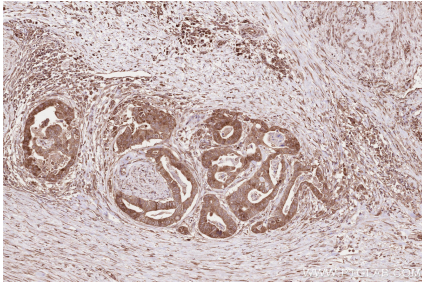
Background

ZnT6 (encoded by SLC30A6) is a member of zinc transporters. ZnT6 is localized on the membrane of the Golgi apparatus as well as cytoplasmic vesicles. It may function in transporting the cytoplasmic zinc into the Golgi apparatus as well as the vesicular compartment. Altered expression of ZnT6 may correlate to neural diseases including Alzheimer's disease.

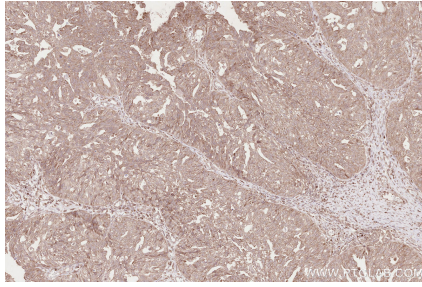
Synonyms

SLC30A6,ZnT 6,ZNT6,ZnT-6

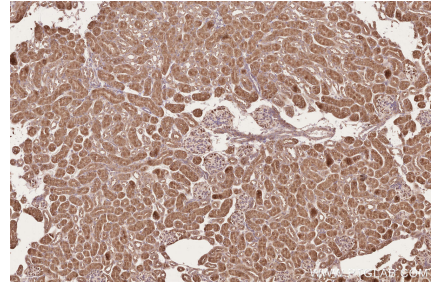
Selected Validation Data



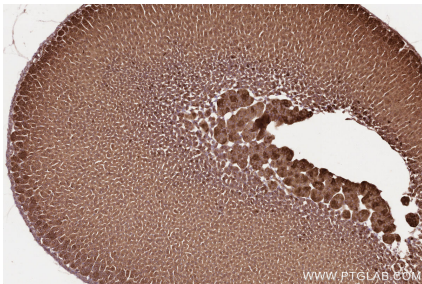
Immunohistochemical analysis of paraffin-embedded human stomach cancer tissue slide using KHC2583 (SLC30A6/ZNT6 IHC Kit).



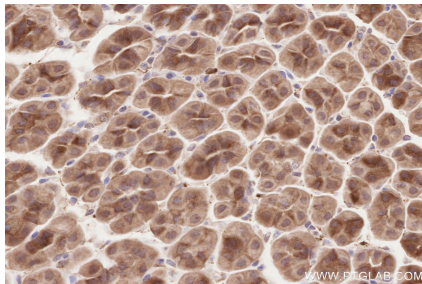
Immunohistochemical analysis of paraffin-embedded human ovary cancer tissue slide using KHC2583 (SLC30A6/ZNT6 IHC Kit).



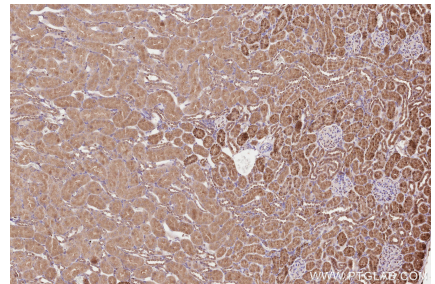
Immunohistochemical analysis of paraffin-embedded mouse kidney tissue slide using KHC2583 (SLC30A6/ZNT6 IHC Kit).



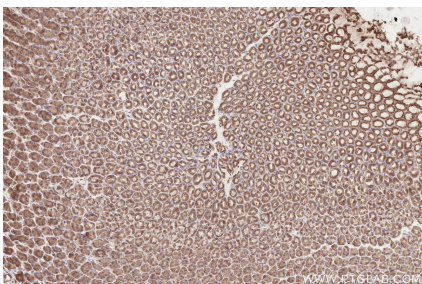
Immunohistochemical analysis of paraffin-embedded mouse adrenal gland tissue slide using KHC2583 (SLC30A6/ZNT6 IHC Kit).



Immunohistochemical analysis of paraffin-embedded mouse stomach tissue slide using KHC2583 (SLC30A6/ZNT6 IHC Kit).



Immunohistochemical analysis of paraffin-embedded rat kidney tissue slide using KHC2583 (SLC30A6/ZNT6 IHC Kit).



Immunohistochemical analysis of paraffin-embedded rat stomach tissue slide using KHC2583 (SLC30A6/ZNT6 IHC Kit).