

IHC*easy* FGD5 Ready-To-Use IHC Kit

Catalog Number: **KHC2603**

General Information

Sample type:
FFPE tissue
Cited sample type:
Reactivity:
Human
Cited Reactivity:

Assay type:
Immunohistochemistry
Primary antibody type:
Rabbit Polyclonal
Secondary antibody type:
Polymer-HRP-Goat anti-Rabbit

Kit Component

Component	Size	Concentration
Antigen Retrieval Buffer	100 mL	50×
Washing Buffer	100 mL ×2	20×
Blocking Buffer	5 mL	RTU
Primary Antibody	5 mL	RTU
Secondary Antibody	5 mL	RTU
Chromogen Component A	0.2 mL	RTU
Chromogen Component B	4 mL	RTU
Signal Enhancer	5 mL	RTU
Counter Staining Reagent	5 mL	RTU
Mounting Media	5 mL	RTU
Control Slide	1 slide (Optional)	FFPE
Datasheet	1 Copy	
Manual	1 Copy	

Storage Instructions

All the reagents are stored at 2-8°C. The kit is stable for 6 months from the date of receipt.

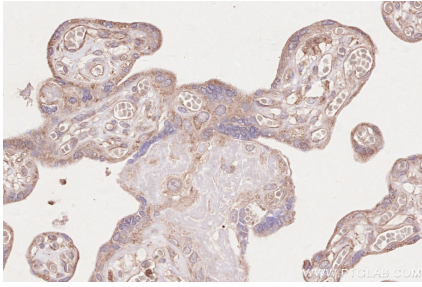
Background

FGD5 (or ZFYVE23) is an endothelial specific gene, plays a crucial role in vascular pruning. Deficient expression of FGD5 markedly inhibits neovascularization, indicated by in vitro tube-formation, aortic-ring, and coated-bead assays and by in vivo coated-bead plug assays and studies in the murine retina model. FGD5-deficient endothelial cells fail to migrate. Moreover, the cells are susceptible to proapoptotic stimuli associated with VEGF-stimulated activation of Akt. FGD5 promotes apoptosis-induced vaso-obliteration via induction of the hey1-p53 pathway by direct binding and activation of CDC42.

Synonyms

FGD5, FYVE, RhoGEF and PH domain-containing protein

Selected Validation Data



Immunohistochemical analysis of paraffin-embedded human placenta tissue slide using KHC2603 (FGD5 IHC Kit).