

IHC*easy* SIAH1 Ready-To-Use IHC Kit

Catalog Number: **KHC2643**

General Information

Sample type:
FFPE tissue

Cited sample type:

Reactivity:
Human, Mouse

Cited Reactivity:

Assay type:
Immunohistochemistry

Primary antibody type:
Rabbit Recombinant

Secondary antibody type:
Polymer-HRP-Goat anti-Rabbit

Kit Component

Component	Size	Concentration
Antigen Retrieval Buffer	100 mL	50×
Washing Buffer	100 mL ×2	20×
Blocking Buffer	5 mL	RTU
Primary Antibody	5 mL	RTU
Secondary Antibody	5 mL	RTU
Chromogen Component A	0.2 mL	RTU
Chromogen Component B	4 mL	RTU
Signal Enhancer	5 mL	RTU
Counter Staining Reagent	5 mL	RTU
Mounting Media	5 mL	RTU
Control Slide	1 slide (Optional)	FFPE
Datasheet	1 Copy	
Manual	1 Copy	

Storage Instructions

All the reagents are stored at 2-8°C. The kit is stable for 6 months from the date of receipt.

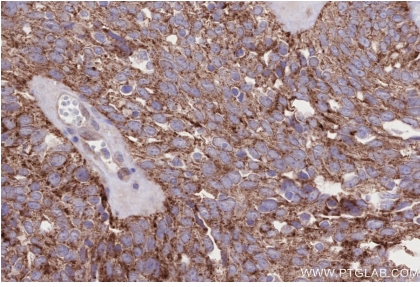
Background

SIAH1, also named as HUMSIAH, Siah-1a and Siah-1S(21kd), belongs to the SINA (Seven in absentia) family. SIAH1 is known to cause indirect degradation of beta-catenin through formation of a complex with Siah-interacting protein (SIP), Skp1 and Ebi. Importantly, results from in vitro soft agar assay demonstrated that Siah-1S displays a promotion effect on cells tumorigenicity.

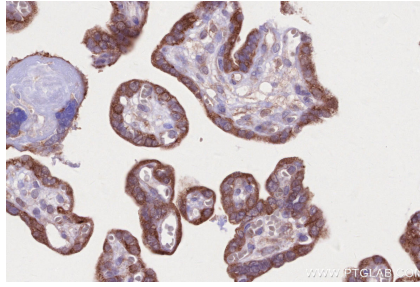
Synonyms

SIAH1,E3 ubiquitin-protein ligase SIAH1,EC:2.3.2.2

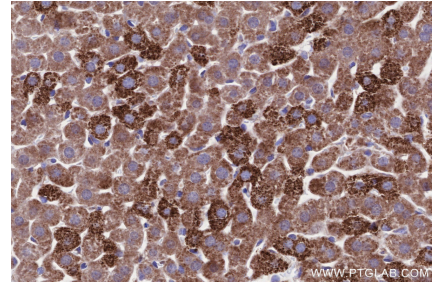
Selected Validation Data



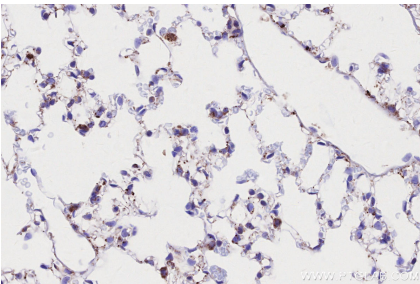
Immunohistochemical analysis of paraffin-embedded human ovary cancer tissue slide using KHC2643 (SIAH1 IHC Kit).



Immunohistochemical analysis of paraffin-embedded human placenta tissue slide using KHC2643 (SIAH1 IHC Kit).



Immunohistochemical analysis of paraffin-embedded mouse liver tissue slide using KHC2643 (SIAH1 IHC Kit).



Immunohistochemical analysis of paraffin-embedded mouse lung tissue slide using KHC2643 (SIAH1 IHC Kit).