

IHC*easy* FMNL3 Ready-To-Use IHC Kit

Catalog Number: **KHC2646**

General Information

Sample type:
FFPE tissue

Cited sample type:

Reactivity:
Human, Mouse, Rat

Cited Reactivity:

Assay type:
Immunohistochemistry

Primary antibody type:
Rabbit Polyclonal

Secondary antibody type:
Polymer-HRP-Goat anti-Rabbit

Kit Component

Component	Size	Concentration
Antigen Retrieval Buffer	100 mL	50×
Washing Buffer	100 mL ×2	20×
Blocking Buffer	5 mL	RTU
Primary Antibody	5 mL	RTU
Secondary Antibody	5 mL	RTU
Chromogen Component A	0.2 mL	RTU
Chromogen Component B	4 mL	RTU
Signal Enhancer	5 mL	RTU
Counter Staining Reagent	5 mL	RTU
Mounting Media	5 mL	RTU
Control Slide	1 slide (Optional)	FFPE
Datasheet	1 Copy	
Manual	1 Copy	

Storage Instructions

All the reagents are stored at 2-8°C. The kit is stable for 6 months from the date of receipt.

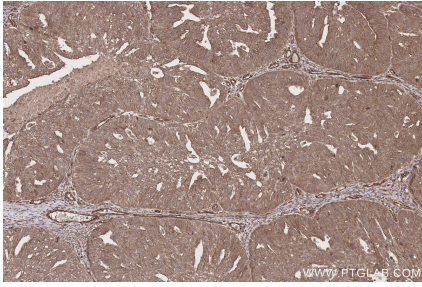
Background

FMNL3 plays a role in the regulation of cell morphology and cytoskeletal organization. It is required in the control of cell shape and migration. In quiescent endothelial cells, FMNL3 triggers rearrangement of the actin cytoskeleton, but does not alter microtubule alignment.

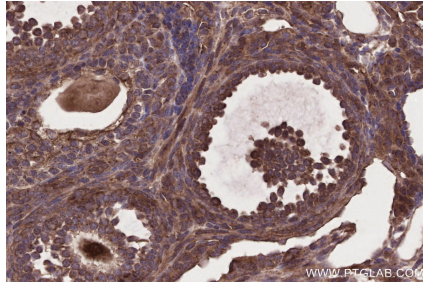
Synonyms

FMNL3, FHOD3, formin like 3, Formin like protein 3, KI

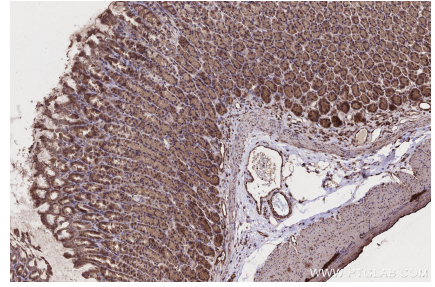
Selected Validation Data



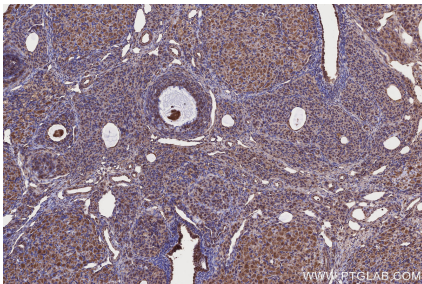
Immunohistochemical analysis of paraffin-embedded human ovary cancer tissue slide using KHC2646 (FMNL3 IHC Kit).



Immunohistochemical analysis of paraffin-embedded mouse ovary tissue slide using KHC2646 (FMNL3 IHC Kit).



Immunohistochemical analysis of paraffin-embedded rat stomach tissue slide using KHC2646 (FMNL3 IHC Kit).



Immunohistochemical analysis of paraffin-embedded rat ovary tissue slide using KHC2646 (FMNL3 IHC Kit).