

IHCeasy[®] RAB8 Ready-To-Use IHC Kit

Catalog Number: **KHC2766**

General Information

Sample type:
FFPE tissue
Cited sample type:
Reactivity:
Human, Mouse, Rat
Cited Reactivity:

Assay type:
Immunohistochemistry
Primary antibody type:
Rabbit Polyclonal
Secondary antibody type:
Polymer-HRP-Goat anti-Rabbit

Kit Component

Component	Size	Concentration
Antigen Retrieval Buffer	100 mL	50×
Washing Buffer	100 mL ×2	20×
Blocking Buffer	5 mL	RTU
Primary Antibody	5 mL	RTU
Secondary Antibody	5 mL	RTU
Chromogen Component A	0.2 mL	RTU
Chromogen Component B	4 mL	RTU
Signal Enhancer	5 mL	RTU
Counter Staining Reagent	5 mL	RTU
Mounting Media	5 mL	RTU
Control Slide	1 slide (Optional)	FFPE
Datasheet	1 Copy	
Manual	1 Copy	

Storage Instructions

All the reagents are stored at 2-8°C. The kit is stable for 6 months from the date of receipt.

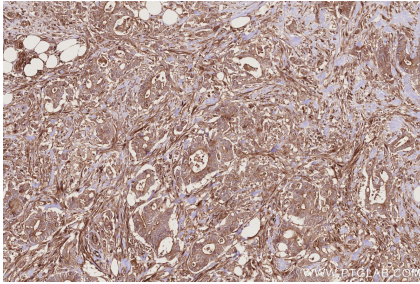
Background

The Rab8 GTPase is a member of the Ras superfamily that functions in protein transport and membrane restructuring. RAB8 has two isoforms, RAB8A and RAB8B, that share 40% amino acid identity in the C-terminal variable region. RAB8 activity is regulated by specific guanine nucleotide exchange factors (GEFs), that mediate GTP loading, and GTPase activating proteins (GAPs) that convert them into the inactive GDP-bound form. RAB8 participates in recycling of the α -amino-3-hydroxy-5-methyl-4-isoxazolepropionic acid (AMPA) receptors to the dendritic spine surface as well as in the intracellular transport of the metabotropic glutamate receptor type 1 in neuronal cells. Rab8 is activated at the base of the cilium by its guanine nucleotide exchanger Rabin8. Primary antibody in this kit recognizes both RAB8A and RAB8B.

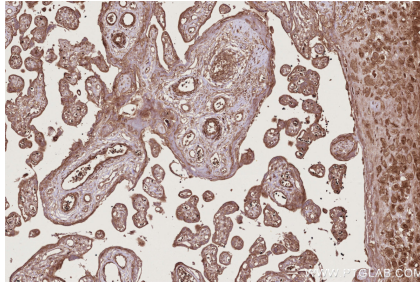
Synonyms

RAB8B, Ras related protein Rab 8B, Ras-related protein Rab-8B

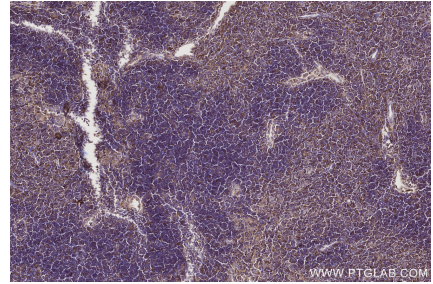
Selected Validation Data



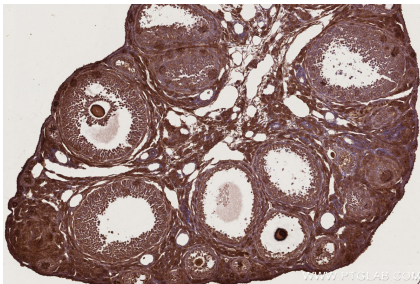
Immunohistochemical analysis of paraffin-embedded human rectal cancer tissue slide using KHC2766 (RAB8 IHC Kit).



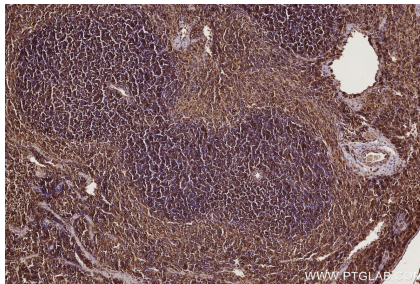
Immunohistochemical analysis of paraffin-embedded human placenta tissue slide using KHC2766 (RAB8 IHC Kit).



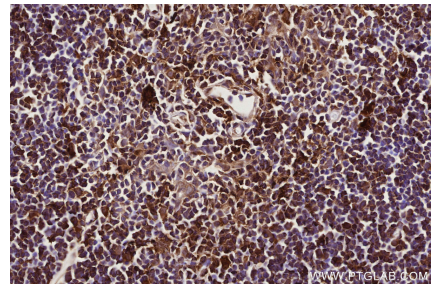
Immunohistochemical analysis of paraffin-embedded mouse thymus tissue slide using KHC2766 (RAB8 IHC Kit).



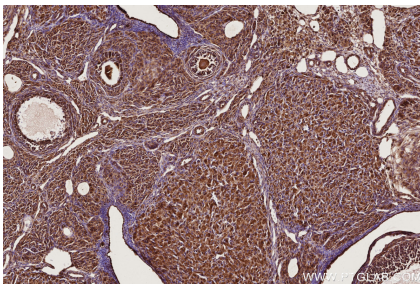
Immunohistochemical analysis of paraffin-embedded mouse ovary tissue slide using KHC2766 (RAB8 IHC Kit).



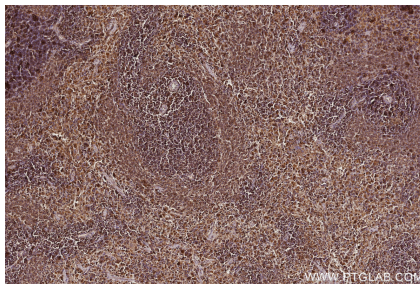
Immunohistochemical analysis of paraffin-embedded mouse spleen tissue slide using KHC2766 (RAB8 IHC Kit).



Immunohistochemical analysis of paraffin-embedded rat thymus tissue slide using KHC2766 (RAB8 IHC Kit).



Immunohistochemical analysis of paraffin-embedded rat ovary tissue slide using KHC2766 (RAB8 IHC Kit).



Immunohistochemical analysis of paraffin-embedded rat spleen tissue slide using KHC2766 (RAB8 IHC Kit).