

IHCeasy[®] SLC25A46 Ready-To-Use IHC Kit

Catalog Number: **KHC2776**

General Information

Sample type:
FFPE tissue
Cited sample type:
Reactivity:
Human, Mouse, Rat
Cited Reactivity:

Assay type:
Immunohistochemistry
Primary antibody type:
Rabbit Polyclonal
Secondary antibody type:
Polymer-HRP-Goat anti-Rabbit

Kit Component

Component	Size	Concentration
Antigen Retrieval Buffer	100 mL	50×
Washing Buffer	100 mL ×2	20×
Blocking Buffer	5 mL	RTU
Primary Antibody	5 mL	RTU
Secondary Antibody	5 mL	RTU
Chromogen Component A	0.2 mL	RTU
Chromogen Component B	4 mL	RTU
Signal Enhancer	5 mL	RTU
Counter Staining Reagent	5 mL	RTU
Mounting Media	5 mL	RTU
Control Slide	1 slide (Optional)	FFPE
Datasheet	1 Copy	
Manual	1 Copy	

Storage Instructions

All the reagents are stored at 2-8°C. The kit is stable for 6 months from the date of receipt.

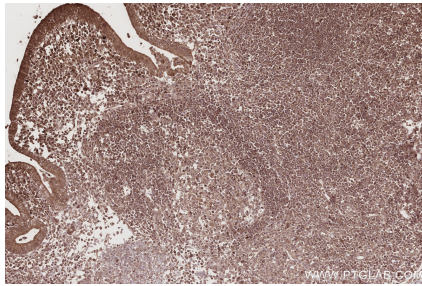
Background

Solute carrier family 25 member 46 (SLC25A46), a highly conserved protein among various species including vertebrates, is a nuclear gene encoding mitochondrial carriers. SLC25A46 is involved in mitochondrial fission and the transport of lipids from the endoplasmic reticulum to mitochondria.

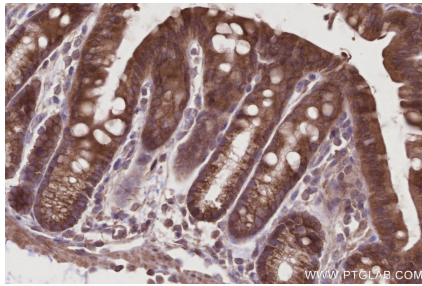
Synonyms

Mitochondrial outer membrane protein SLC25A46, TB1

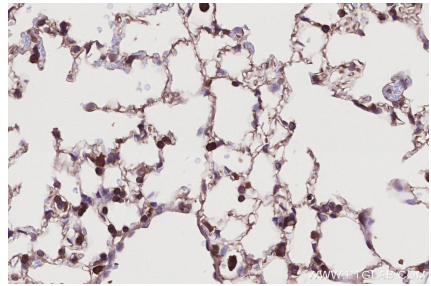
Selected Validation Data



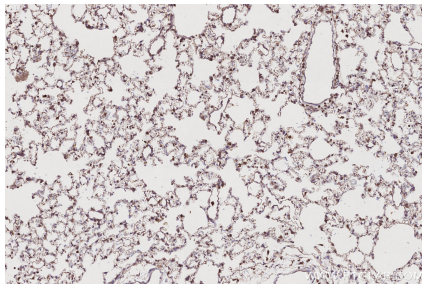
Immunohistochemical analysis of paraffin-embedded human appendicitis tissue slide using KHC2776 (SLC25A46 IHC Kit).



Immunohistochemical analysis of paraffin-embedded mouse colon tissue slide using KHC2776 (SLC25A46 IHC Kit).



Immunohistochemical analysis of paraffin-embedded mouse lung tissue slide using KHC2776 (SLC25A46 IHC Kit).



Immunohistochemical analysis of paraffin-embedded rat lung tissue slide using KHC2776 (SLC25A46 IHC Kit).