

# IHCeasy<sup>®</sup> HAUS1 Ready-To-Use IHC Kit

Catalog Number: **KHC2782**

## General Information

Sample type:  
FFPE tissue  
Cited sample type:  
Reactivity:  
Human, Mouse, Rat  
Cited Reactivity:

Assay type:  
Immunohistochemistry  
Primary antibody type:  
Rabbit Polyclonal  
Secondary antibody type:  
Polymer-HRP-Goat anti-Rabbit

## Kit Component

Component	Size	Concentration
Antigen Retrieval Buffer	100 mL	50×
Washing Buffer	100 mL ×2	20×
Blocking Buffer	5 mL	RTU
Primary Antibody	5 mL	RTU
Secondary Antibody	5 mL	RTU
Chromogen Component A	0.2 mL	RTU
Chromogen Component B	4 mL	RTU
Signal Enhancer	5 mL	RTU
Counter Staining Reagent	5 mL	RTU
Mounting Media	5 mL	RTU
Control Slide	1 slide (Optional)	FFPE
Datasheet	1 Copy	
Manual	1 Copy	

## Storage Instructions

All the reagents are stored at 2-8°C. The kit is stable for 6 months from the date of receipt.

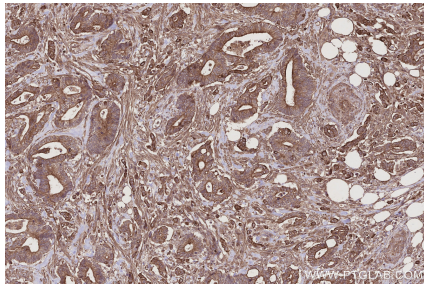
## Background

HAUS1 is a subunit of the human augmin complex that is involved in microtubule generation and mitotic spindle formation. In addition, HAUS1 may play a major role in centrosome integrity and completion of cytokinesis. The depletion of HAUS1 in cells decreases the G2/M cell compartment and induces apoptosis. High HAUS1 expression was associated with several tumour-infiltrating immune cells such as Th2 cells, macrophages, and activated dendritic cells.

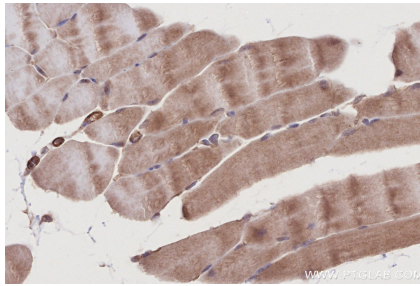
## Synonyms

CCDC5, Coiled-coil domain-containing protein 5, Enhancer of invasion cluster, Enhancer of invasion-cluster, HAUS augmin-like complex subunit 1

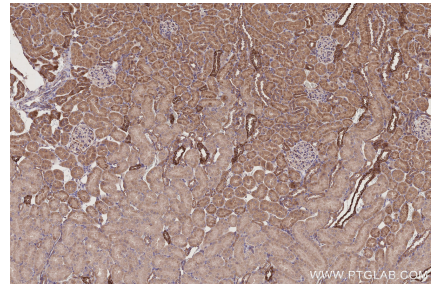
## Selected Validation Data



Immunohistochemical analysis of paraffin-embedded human rectal cancer tissue slide using KHC2782 (HAUS1 IHC Kit).



Immunohistochemical analysis of paraffin-embedded mouse skeletal muscle tissue slide using KHC2782 (HAUS1 IHC Kit).



Immunohistochemical analysis of paraffin-embedded rat kidney tissue slide using KHC2782 (HAUS1 IHC Kit).