

IHCeasy[®] Neurabin 2 Ready-To-Use IHC Kit

Catalog Number: **KHC2833**

General Information

Sample type:
FFPE tissue
Cited sample type:
Reactivity:
Human, Rat
Cited Reactivity:

Assay type:
Immunohistochemistry
Primary antibody type:
Rabbit Polyclonal
Secondary antibody type:
Polymer-HRP-Goat anti-Rabbit

Kit Component

Component	Size	Concentration
Antigen Retrieval Buffer	100 mL	50×
Washing Buffer	100 mL ×2	20×
Blocking Buffer	5 mL	RTU
Primary Antibody	5 mL	RTU
Secondary Antibody	5 mL	RTU
Chromogen Component A	0.2 mL	RTU
Chromogen Component B	4 mL	RTU
Signal Enhancer	5 mL	RTU
Counter Staining Reagent	5 mL	RTU
Mounting Media	5 mL	RTU
Control Slide	1 slide (Optional)	FFPE
Datasheet	1 Copy	
Manual	1 Copy	

Storage Instructions

All the reagents are stored at 2-8°C. The kit is stable for 6 months from the date of receipt.

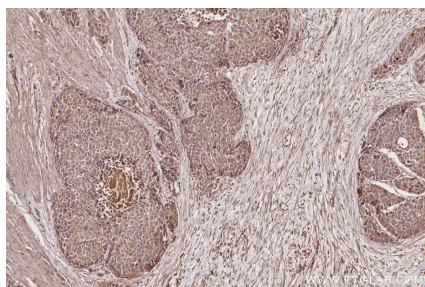
Background

Neurabin 2, also named as Spinophilin, seems to act as a scaffold protein in multiple signaling pathways. It modulates excitatory synaptic transmission and dendritic spine morphology. PPP1R9B binds to actin filaments (F-actin) and shows cross-linking activity. It may play an important role in linking the actin cytoskeleton to the plasma membrane at the synaptic junction. PPP1R9B plays a role in regulation of G-protein coupled receptor signaling, including D2Rs and alpha-adrenergic receptors. PPP1R9B probably regulates p70 S6 kinase activity by forming a complex with TIAM.

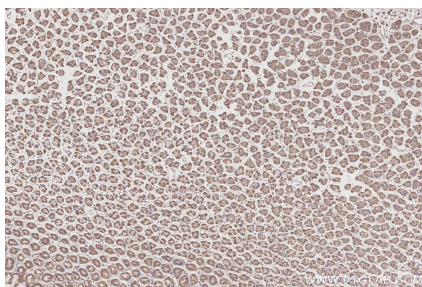
Synonyms

Neurabin II, Neurabin-2, Neurabin-II, PPP1R6, PPP1R9B

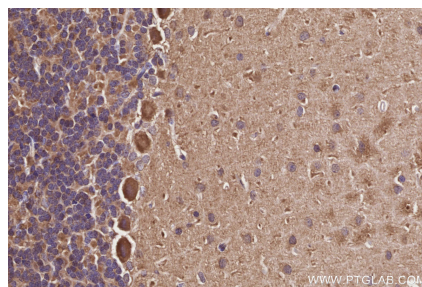
Selected Validation Data



Immunohistochemical analysis of paraffin-embedded human stomach cancer tissue slide using KHC2833 (Neurabin 2 IHC Kit).



Immunohistochemical analysis of paraffin-embedded rat stomach tissue slide using KHC2833 (Neurabin 2 IHC Kit).



Immunohistochemical analysis of paraffin-embedded rat cerebellum tissue slide using KHC2833 (Neurabin 2 IHC Kit).