

IHCeasy[®] PIP5K1A Ready-To-Use IHC Kit

Catalog Number: **KHC2848**

General Information

Sample type:
FFPE tissue
Cited sample type:
Reactivity:
Human, Mouse, Rat
Cited Reactivity:

Assay type:
Immunohistochemistry
Primary antibody type:
Rabbit Polyclonal
Secondary antibody type:
Polymer-HRP-Goat anti-Rabbit

Kit Component

| Component | Size | Concentration |
|--------------------------|--------------------|---------------|
| Antigen Retrieval Buffer | 100 mL | 50× |
| Washing Buffer | 100 mL ×2 | 20× |
| Blocking Buffer | 5 mL | RTU |
| Primary Antibody | 5 mL | RTU |
| Secondary Antibody | 5 mL | RTU |
| Chromogen Component A | 0.2 mL | RTU |
| Chromogen Component B | 4 mL | RTU |
| Signal Enhancer | 5 mL | RTU |
| Counter Staining Reagent | 5 mL | RTU |
| Mounting Media | 5 mL | RTU |
| Control Slide | 1 slide (Optional) | FFPE |
| Datasheet | 1 Copy | |
| Manual | 1 Copy | |

Storage Instructions

All the reagents are stored at 2-8°C. The kit is stable for 6 months from the date of receipt.

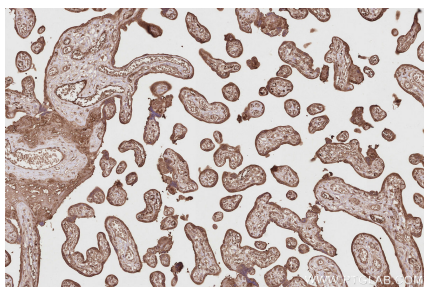
Background

Phosphatidylinositol 4-phosphate 5-kinases (PIP5Ks) play diverse roles in the cellular biology of many organisms, including signal transduction, secretion and vesicular trafficking, and regulation of cytoskeleton assembly. There are three PIP5K isoforms, α , β , and γ . The nomenclature for the α and β isoforms is switched between humans and mice. There are also several splicing variants of the γ isozyme have been identified.

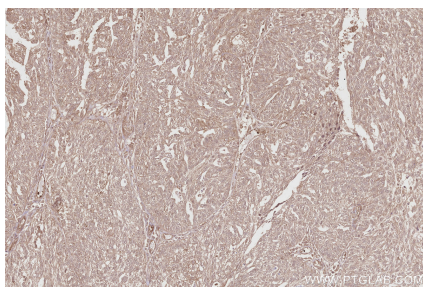
Synonyms

68 kDa type I phosphatidylinositol 4-phosphate 5-kinase alpha, EC:2.7.1.68, Phosphatidylinositol 4-phosphate 5-kinase type I alpha, Phosphatidylinositol 4-phosphate 5-kinase type-1 alpha, PIP5K1 alpha

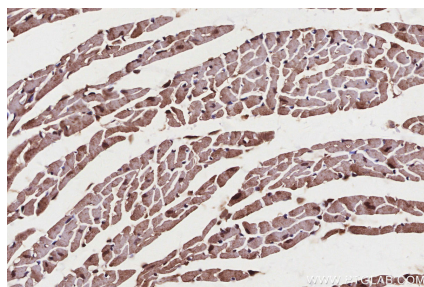
Selected Validation Data



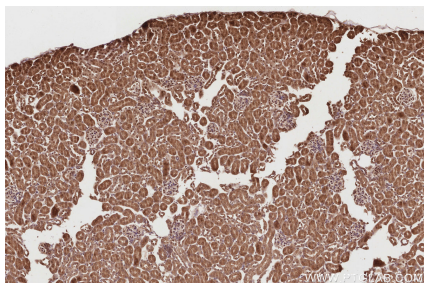
Immunohistochemical analysis of paraffin-embedded human placenta tissue slide using KHC2848 (PIP5K1A IHC Kit).



Immunohistochemical analysis of paraffin-embedded human ovary cancer tissue slide using KHC2848 (PIP5K1A IHC Kit).



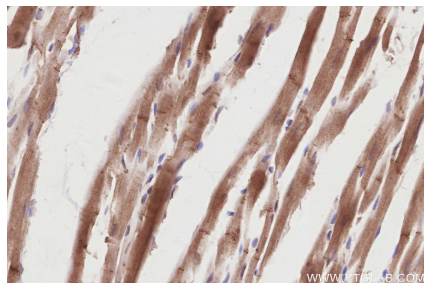
Immunohistochemical analysis of paraffin-embedded mouse heart tissue slide using KHC2848 (PIP5K1A IHC Kit).



Immunohistochemical analysis of paraffin-embedded mouse kidney tissue slide using KHC2848 (PIP5K1A IHC Kit).



Immunohistochemical analysis of paraffin-embedded mouse pancreas tissue slide using KHC2848 (PIP5K1A IHC Kit).



Immunohistochemical analysis of paraffin-embedded rat heart tissue slide using KHC2848 (PIP5K1A IHC Kit).