

IHCeasy[®] INO80 Ready-To-Use IHC Kit

Catalog Number: **KHC3035**

General Information

Sample type:
FFPE tissue
Cited sample type:
Reactivity:
Human, Mouse, Rat
Cited Reactivity:

Assay type:
Immunohistochemistry
Primary antibody type:
Rabbit Recombinant
Secondary antibody type:
Polymer-HRP-Goat anti-Rabbit

Kit Component

Component	Size	Concentration
Antigen Retrieval Buffer	100 mL	50×
Washing Buffer	100 mL ×2	20×
Blocking Buffer	5 mL	RTU
Primary Antibody	5 mL	RTU
Secondary Antibody	5 mL	RTU
Chromogen Component A	0.2 mL	RTU
Chromogen Component B	4 mL	RTU
Signal Enhancer	5 mL	RTU
Counter Staining Reagent	5 mL	RTU
Mounting Media	5 mL	RTU
Control Slide	1 slide (Optional)	FFPE
Datasheet	1 Copy	
Manual	1 Copy	

Storage Instructions

All the reagents are stored at 2-8°C. The kit is stable for 6 months from the date of receipt.

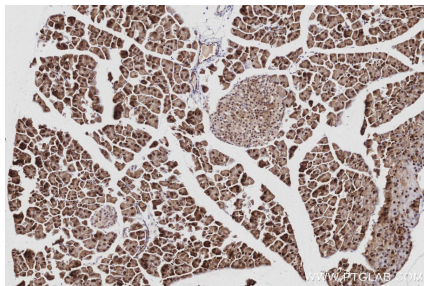
Background

DNA helicase INO80, also named INO80 or hINO80, is a 1,556 amino acid protein, which contains one helicase C-terminal domain, one helicase ATP-binding domain, and one DBINO domain. INO80 co-localizes with PCMA at replication forks during S-phase in the nucleus and belongs to the SNF2 helicase family. INO80 is a component of the chromatin remodeling INO80 complex and is widely expressed in many tissues, such as brain, liver and pancreas. INO80 is involved in transcription regulation.

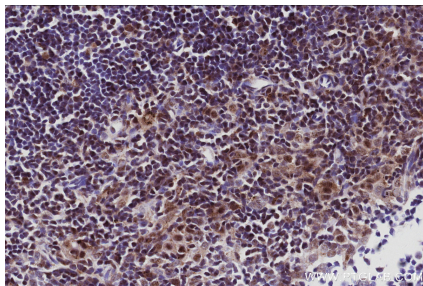
Synonyms

Chromatin-remodeling ATPase INO80, DNA helicase-related INO80 complex homolog 1, DNA helicase-related protein INO80, EC:3.6.4.-, hINO80

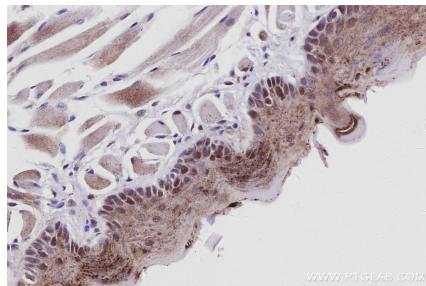
Selected Validation Data



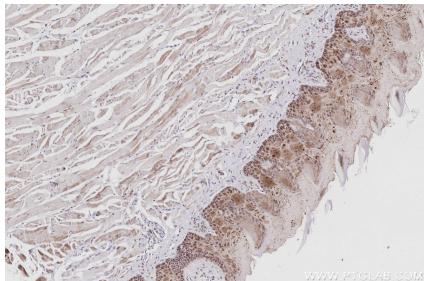
Immunohistochemical analysis of paraffin-embedded mouse pancreas tissue slide using KHC3035 (INO80 IHC Kit).



Immunohistochemical analysis of paraffin-embedded mouse thymus tissue slide using KHC3035 (INO80 IHC Kit).



Immunohistochemical analysis of paraffin-embedded mouse tongue tissue slide using KHC3035 (INO80 IHC Kit).



Immunohistochemical analysis of paraffin-embedded rat tongue tissue slide using KHC3035 (INO80 IHC Kit).