

IHCeasy[®] KIDINS220 Ready-To-Use IHC Kit

Catalog Number: **KHC3036**

General Information

Sample type:
FFPE tissue
Cited sample type:
Reactivity:
Human, Mouse, Rat
Cited Reactivity:

Assay type:
Immunohistochemistry
Primary antibody type:
Rabbit Polyclonal
Secondary antibody type:
Polymer-HRP-Goat anti-Rabbit

Kit Component

Component	Size	Concentration
Antigen Retrieval Buffer	100 mL	50×
Washing Buffer	100 mL ×2	20×
Blocking Buffer	5 mL	RTU
Primary Antibody	5 mL	RTU
Secondary Antibody	5 mL	RTU
Chromogen Component A	0.2 mL	RTU
Chromogen Component B	4 mL	RTU
Signal Enhancer	5 mL	RTU
Counter Staining Reagent	5 mL	RTU
Mounting Media	5 mL	RTU
Control Slide	1 slide (Optional)	FFPE
Datasheet	1 Copy	
Manual	1 Copy	

Storage Instructions

All the reagents are stored at 2-8°C. The kit is stable for 6 months from the date of receipt.

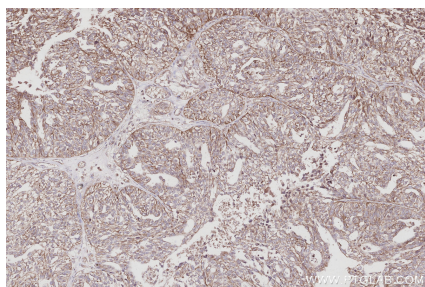
Background

Kidins220 (Kinase D-interacting substrate 220 kD) is a crucial mediator of signal transduction in neural tissues. Also it named ARMS(Ankyrin Repeat-Rich Membrane Spanning) due to the presence of ankyrin repeats and transmembrane domains together with other binding motifs. It is a multidomain transmembrane protein that not only transduces signaling mediated by the receptor tyrosine kinase (RTK), but also regulates the stability of cytoskeletal network through a number of cytoskeleton-associated proteins, including Septin5, MAPs, and stathmin family members.

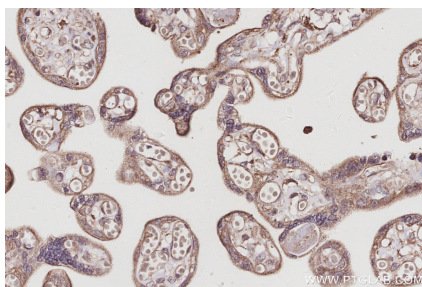
Synonyms

Ankyrin repeat-rich membrane-spanning protein, ARMS, KIDINS 220, Kinase D-interacting substrate of 220 kDa

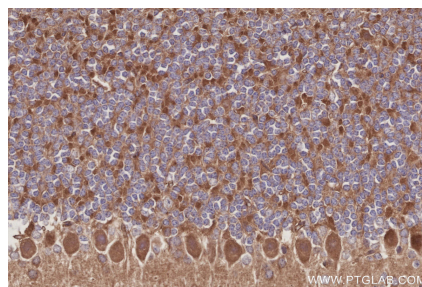
Selected Validation Data



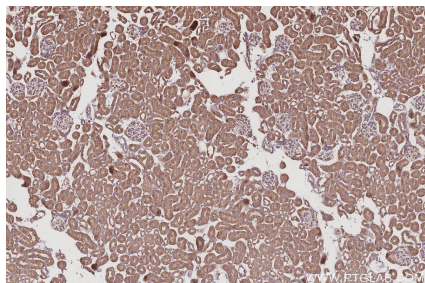
Immunohistochemical analysis of paraffin-embedded human ovary cancer tissue slide using KHC3036 (KIDINS220 IHC Kit).



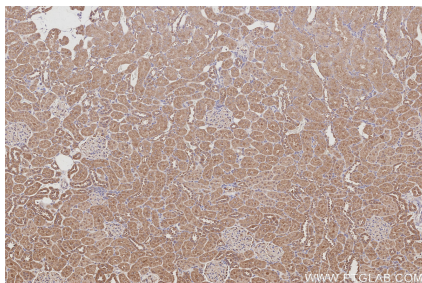
Immunohistochemical analysis of paraffin-embedded human placenta tissue slide using KHC3036 (KIDINS220 IHC Kit).



Immunohistochemical analysis of paraffin-embedded mouse cerebellum tissue slide using KHC3036 (KIDINS220 IHC Kit).



Immunohistochemical analysis of paraffin-embedded mouse kidney tissue slide using KHC3036 (KIDINS220 IHC Kit).



Immunohistochemical analysis of paraffin-embedded rat kidney tissue slide using KHC3036 (KIDINS220 IHC Kit).