

For Research Use Only

Human CD3 T Cell Isolation Kit

Catalog Number: KMS309



www.ptgcn.com

Description

CD3 is a multimeric protein associated with T cell receptor (TCR) to form a complex involved in antigen recognition and signal transduction. Human CD3 T Cell Isolation kit is designed to isolate untouched CD3 T cells which contains a biotin labeled antibody cocktail and streptavidin conjugated magnetic beads. Through incubation of samples with biotin antibody cocktail followed by incubation of streptavidin beads, the magnetically labeled non-CD3 cells will be retained in the tube by magnetic separator. The untouched CD3 T cells are collected in supernatant. Any downstream application can be performed on CD3 T cells after separation, such as Flow Cytometry and in vitro culture.

Components

KMS309-10:

- MS309A-10: 300µL Human CD3 T Cell Isolation Biotin Antibody Cocktail (CD14, CD15, CD19, CD56, CD36, CD235a, CD123)

- MS309B-10: 300µL streptavidin magnetic beads

KMS309-100:

- MS309A-100: 3mL Human CD3 T Cell Isolation Biotin Antibody Cocktail (CD14, CD15, CD19, CD56, CD36, CD235a, CD123)

- MS309B-100: 3mL streptavidin magnetic beads

Package

10test/100test

Storage

2-8°C

Storage buffer

PBS, pH7.4, 0.2% BSA and 0.05% Sodium Azide

Reactivity

Human

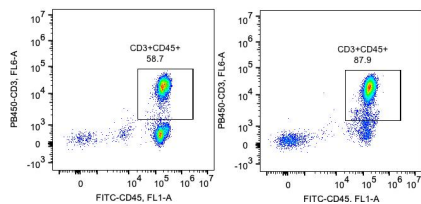
Beads diameter

2.7 µm

Recommend usage

30µL biotin labeled antibody cocktail and 30µL streptavidin beads for 1×10^7 cells

Results



Representative example of enrichment: Following enrichment, cell suspension was stained with PB450-CD3 (UCHT1) and FITC-CD45 (HI30) antibodies. All viable cells are gated in the analysis. Left: CD45+/CD3+ cells before enrichment. Right: CD45+/CD3+ cells after enrichment. Human CD3 T cell isolation kit is... tested using PBMC from three donors.

For technical support and original validation data for this product please contact

T: 027-87531629

E: Proteintech-CN@ptglab.com

W: ptgcn.com

This product is exclusively available under Proteintech Group brand and is not available to purchase from any other manufacturer.