

For Research Use Only

# AFP Recombinant Matched Antibody Pair, PBS Only



Catalog Number:MP00001-4

## Capture Antibody Information

Catalog Number:  
82982-3-PBS

Host:  
Rabbit

Isotype:  
IgG

Purification Method:  
Protein A purification

Clone ID:  
230435G1

Reactivity:  
human

GenBank:  
BC027881

Conjugate:  
Unconjugated

Full name:  
alpha-fetoprotein

Gene ID:  
174

## Detection Antibody Information

Catalog Number:  
82982-4-PBS

Host:  
Rabbit

Isotype:  
IgG

Purification Method:  
Protein A purification

Clone ID:  
230435A11

Reactivity:  
human

GenBank:  
BC027881

Conjugate:  
Unconjugated

Full name:  
alpha-fetoprotein

Gene ID:  
174

## Applications

Tested Applications:  
Sandwich ELISA

Range:  
15.6-1000 pg/mL (Sandwich ELISA)

Recommended Dilutions:  
It is recommended that this reagent should be titrated in each testing system to obtain optimal results.

## Product Information

MP00001-4 targets AFP in immunoassays as a matched antibody pair. Validated in Sandwich ELISA.

Capture antibody: AFP Recombinant antibody, PBS Only (Capture) 82982-3-PBS (230435G1). 100  $\mu$ g. Concentration 1 mg/ml.

Detection antibody: AFP Recombinant antibody, PBS Only (Capture/Detector) 82982-4-PBS (230435A11). 100  $\mu$ g. Concentration 1 mg/ml.

Alternative AFP matched antibody pairs: MP00001-1, MP00001-2, MP00001-3, MP00395-1, MP00395-2, MP00395-3, MP00395-4, MP50072-1

Unconjugated rabbit recombinant monoclonal antibody pair in PBS only storage buffer at a concentration of 1 mg/ml, ready for conjugation. Created using Proteintech's proprietary in-house recombinant technology. Recombinant production enables unrivalled batch-to-batch consistency, easy scale-up, and future security of supply.

Matched antibody pairs are designed for use in a variety of assays and platforms that require matched antibody pairs.

Antibody use should be optimized for each application and assay.

## Storage

Storage:  
Store at -80°C.

The product is shipped with ice packs. Upon receipt, store it immediately at -80°C

Storage buffer:  
PBS only

For technical support and original validation data for this product please contact:

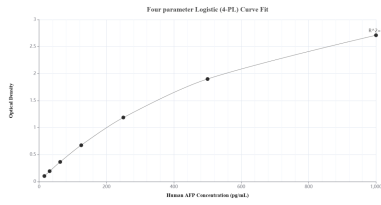
T: 4006900926

E: [Proteintech-CN@ptglab.com](mailto:Proteintech-CN@ptglab.com)

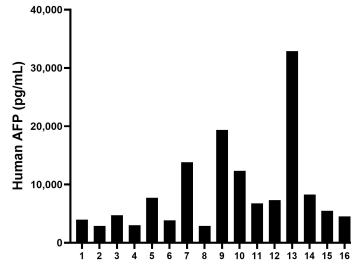
W: [ptgcn.com](http://ptgcn.com)

This product is exclusively available under Proteintech Group brand and is not available to purchase from any other manufacturer.

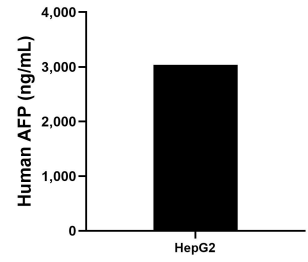
## Selected Validation Data



Sandwich ELISA standard curve of MP00001-4, AFP Recombinant Matched Antibody Pair - PBS only. 82982-3-PBS was coated to a plate as the capture antibody and incubated with serial dilutions of standard Eg0539. 82982-4-PBS was HRP conjugated as the detection antibody. Range: 15.6-1000 pg/mL.



Serum of sixteen individual healthy human donors was measured. The AFP concentration of detected samples was determined to be 8,740.7 pg/mL with a range of 2,872.1 - 32,900 pg/mL.



HepG2 (human hepatocellular carcinoma cells) were cultured in DMEM supplemented with 10% fetal bovine serum, 2.5 mM L-glutamine, 100 U/mL penicillin, and 100  $\mu$ g/mL streptomycin sulfate. The mean AFP concentration was determined to be 3,038.3 ng/mL in HepG2 supernatant.