

For Research Use Only

# ADAMDEC1 Recombinant Matched Antibody Pair, PBS Only



Catalog Number:MP00007-1

## Capture Antibody Information

Catalog Number:  
82985-5-PBS

Host:  
Rabbit

Isotype:  
IgG

Purification Method:  
Protein A purification

Clone ID:  
230367D12

Reactivity:  
human

GenBank:  
BC074877

Immunogen Catalog Number:  
Ag12265

Conjugate:  
Unconjugated

Full name:  
ADAM-like, decysin 1

Gene ID:  
27299

## Detection Antibody Information

Catalog Number:  
82985-4-PBS

Host:  
Rabbit

Isotype:  
IgG

Purification Method:  
Protein A purification

Clone ID:  
230367C1

Reactivity:  
human

GenBank:  
BC074877

Immunogen Catalog Number:  
Ag12265

Conjugate:  
Unconjugated

Full name:  
ADAM-like, decysin 1

Gene ID:  
27299

## Applications

Tested Applications:  
Cytometric bead array

Range:  
0.625-20 ng/mL (Cytometric Bead Array)

Recommended Dilutions:  
It is recommended that this reagent should be titrated in each testing system to obtain optimal results.

## Product Information

MP00007-1 targets ADAMDEC1 in immunoassays as a matched antibody pair. Validated in Cytometric bead array.

Capture antibody: ADAMDEC1 Recombinant antibody, PBS Only (Capture) 82985-5-PBS (230367D12). 100 µg. Concentration 1 mg/ml.

Detection antibody: ADAMDEC1 Recombinant antibody, PBS Only (Detector) 82985-4-PBS (230367C1). 100 µg. Concentration 1 mg/ml.

Alternative ADAMDEC1 matched antibody pairs: MP00007-2

Unconjugated rabbit recombinant monoclonal antibody pair in PBS only storage buffer at a concentration of 1 mg/mL, ready for conjugation. Created using Proteintech's proprietary in-house recombinant technology. Recombinant production enables unrivalled batch-to-batch consistency, easy scale-up, and future security of supply.

Matched antibody pairs are designed for use in a variety of assays and platforms that require matched antibody pairs.

Antibody use should be optimized for each application and assay.

## Storage

Storage:

Store at -80°C.

**The product is shipped with ice packs. Upon receipt, store it immediately at -80°C**

Storage buffer:

PBS only

For technical support and original validation data for this product please contact:

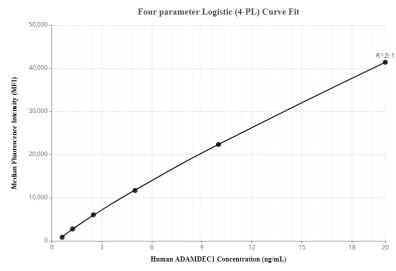
T: 4006900926

E: [Proteintech-CN@ptglab.com](mailto:Proteintech-CN@ptglab.com)

W: [ptgcn.com](http://ptgcn.com)

**This product is exclusively available under Proteintech Group brand and is not available to purchase from any other manufacturer.**

## Selected Validation Data



Cytometric bead array standard curve of MP00007-1, ADAMDEC1 Recombinant Matched Antibody Pair, PBS Only. Capture antibody: 82985-5-PBS. Detection antibody: 82985-4-PBS. Standard: Ag12265. Range: 0.625-20 ng/mL.