

For Research Use Only

Mouse CD68 Recombinant Matched Antibody Pair, PBS Only



Catalog Number:MP00015-4

Capture Antibody Information

Catalog Number:
83014-6-PBS

Host:
Rabbit

Isotype:
IgG

Purification Method:
Protein A purification

Clone ID:
230504H8

Reactivity:
mouse

GenBank:
NM_001291058.1

Conjugate:
Unconjugated

Full name:
CD68 antigen

Gene ID:
12514

Detection Antibody Information

Catalog Number:
83014-2-PBS

Host:
Rabbit

Isotype:
IgG

Purification Method:
Protein A purification

Clone ID:
230504E9

Reactivity:
mouse

GenBank:
NM_001291058.1

Conjugate:
Unconjugated

Full name:
CD68 antigen

Gene ID:
12514

Applications

Tested Applications:
Sandwich ELISA

Range:
7.8-500 pg/mL (Sandwich ELISA)

Recommended Dilutions:
It is recommended that this reagent should be titrated in each testing system to obtain optimal results.

Product Information

MP00015-4 targets CD68 in immunoassays as a matched antibody pair. Validated in Sandwich ELISA.

Capture antibody: Mouse CD68 Recombinant antibody, PBS Only (Capture) 83014-6-PBS (230504H8). 100 μ g. Concentration 1 mg/mL.

Detection antibody: Mouse CD68 Recombinant antibody, PBS Only (Detector) 83014-2-PBS (230504E9). 100 μ g. Concentration 1 mg/mL.

Alternative CD68 matched antibody pairs: MP00015-1, MP00015-2, MP00015-3, MP50230-1, MP50230-2

Unconjugated rabbit recombinant monoclonal antibody pair in PBS only storage buffer at a concentration of 1 mg/mL, ready for conjugation. Created using Proteintech's proprietary in-house recombinant technology. Recombinant production enables unrivalled batch-to-batch consistency, easy scale-up, and future security of supply.

Matched antibody pairs are designed for use in a variety of assays and platforms that require matched antibody pairs.

Antibody use should be optimized for each application and assay.

Storage

Storage:

Store at -80°C.

The product is shipped with ice packs. Upon receipt, store it immediately at -80°C

Storage buffer:

PBS only

For technical support and original validation data for this product please contact:

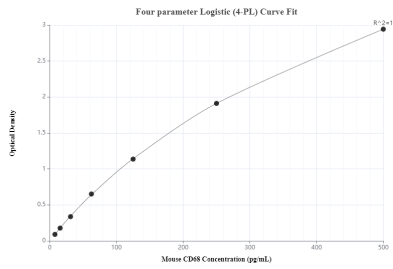
T: 4006900926

E: Proteintech-CN@ptglab.com

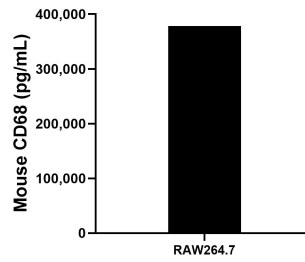
W: ptgcn.com

This product is exclusively available under Proteintech Group brand and is not available to purchase from any other manufacturer.

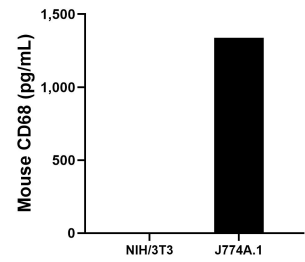
Selected Validation Data



Sandwich ELISA standard curve of MP00015-4, Mouse CD68 Recombinant Matched Antibody Pair - PBS only. 83014-6-PBS was coated to a plate as the capture antibody and incubated with serial dilutions of standard Eg0787. 83014-6-PBS was HRP conjugated as the detection antibody. Range: 7.8-500 pg/mL



The mouse CD68 concentration was determined to be 378,104.1 pg/mL in RAW264.7 cell extract based on a 4.2 mg/mL extract load.



NIH/3T3 mouse embryo fibroblasts were cultured in DMEM supplemented with 10% fetal bovine serum, 2.5 mM L-glutamine, 100 U/mL penicillin and 100 μ g/mL streptomycin sulfate. An aliquot of the cell culture supernatant was removed, assayed for mouse CD68 and measured 3.5 pg/mL. J774A.1 mouse reticulum cell sarcoma macrophage cells were cultured in DMEM supplemented with 10% fetal bovine serum, 2.5 mM L-glutamine, 100 U/mL

