

For Research Use Only

SURF1 Recombinant Matched Antibody Pair, PBS Only



Catalog Number:MP00034-4

Capture Antibody Information

Catalog Number:
83052-2-PBS

Host:
Rabbit

Isotype:
IgG

Purification Method:
Protein A purification

Clone ID:
230210D1

Reactivity:
human

GenBank:
BC028314

Immunogen Catalog Number:
Ag3959

Conjugate:
Unconjugated

Full name:
surfeit 1

Gene ID:
6834

Detection Antibody Information

Catalog Number:
83052-8-PBS

Host:
Rabbit

Isotype:
IgG

Purification Method:
Protein A purification

Clone ID:
230210H5

Reactivity:
human

GenBank:
BC028314

Immunogen Catalog Number:
Ag3959

Conjugate:
Unconjugated

Full name:
surfeit 1

Gene ID:
6834

Applications

Tested Applications:
Sandwich ELISA

Range:
62.5-4000 pg/mL (Sandwich ELISA)

Recommended Dilutions:
It is recommended that this reagent should be titrated in each testing system to obtain optimal results.

Product Information

MP00034-4 targets SURF1 in immunoassays as a matched antibody pair. Validated in Sandwich ELISA.

Capture antibody: SURF1 Recombinant antibody, PBS Only (Capture) 83052-2-PBS (230210D1). 100 µg. Concentration 1 mg/ml.

Detection antibody: SURF1 Recombinant antibody, PBS Only (Detector) 83052-8-PBS (230210H5). 100 µg. Concentration 1 mg/ml.

Alternative SURF1 matched antibody pairs: MP00034-1, MP00034-2, MP00034-3

Unconjugated rabbit recombinant monoclonal antibody pair in PBS only storage buffer at a concentration of 1 mg/mL, ready for conjugation. Created using Proteintech's proprietary in-house recombinant technology. Recombinant production enables unrivalled batch-to-batch consistency, easy scale-up, and future security of supply.

Matched antibody pairs are designed for use in a variety of assays and platforms that require matched antibody pairs.

Antibody use should be optimized for each application and assay.

Storage

Storage:

Store at -80°C.

The product is shipped with ice packs. Upon receipt, store it immediately at -80°C

Storage buffer:

PBS only

For technical support and original validation data for this product please contact:

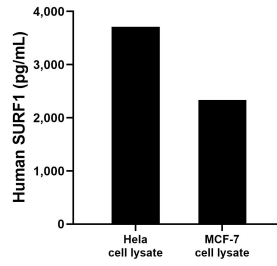
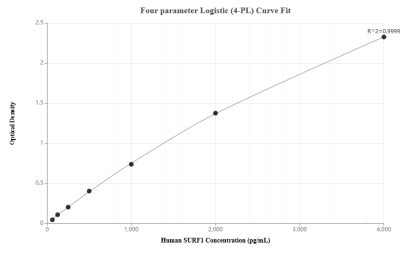
T: 4006900926

E: Proteintech-CN@ptglab.com

W: ptgcn.com

This product is exclusively available under Proteintech Group brand and is not available to purchase from any other manufacturer.

Selected Validation Data



Sandwich ELISA standard curve of MP00034-4, Human SURF1 Recombinant Matched Antibody Pair - PBS only. 83052-2-PBS was coated to a plate as the capture antibody and incubated with serial dilutions of standard Ag3959. 83052-8-PBS was HRP conjugated as the detection antibody. Range: 62.5-4000 pg/mL.

HeLa and MCF-7 cell lysates were measured. The human SURF1 concentration of detected samples was determined to be 3,709.4 pg/mL (based on a 6.4 mg/mL extract load) in HeLa cell lysate and 2,335.0 pg/mL (based on a 4.3 mg/mL extract load) in MCF-7 cell lysate.