

For Research Use Only

IL-12/IL-23 p40 Recombinant Matched Antibody Pair, PBS Only



Catalog Number:MP00035-4

Capture Antibody Information

Catalog Number:
83008-5-PBS

Host:
Rabbit

Isotype:
IgG

Purification Method:
Protein A purification

Clone ID:
241600F8

Reactivity:
human

GenBank:
BC067498

Conjugate:
Unconjugated

Full name:
interleukin 12B (natural killer cell stimulatory factor 2, cytotoxic lymphocyte maturation factor 2, p40)

Gene ID:
3593

Detection Antibody Information

Catalog Number:
83008-6-PBS

Host:
Rabbit

Isotype:
IgG

Purification Method:
Protein A purification

Clone ID:
241600G10

Reactivity:
human

GenBank:
BC067498

Conjugate:
Unconjugated

Full name:
interleukin 12B (natural killer cell stimulatory factor 2, cytotoxic lymphocyte maturation factor 2, p40)

Gene ID:
3593

Applications

Tested Applications:
Sandwich ELISA

Range:
15.6-1000 pg/mL (Sandwich ELISA)

Recommended Dilutions:
It is recommended that this reagent should be titrated in each testing system to obtain optimal results.

Product Information

MP00035-4 targets IL-12/IL-23 p40 in immunoassays as a matched antibody pair. Validated in Sandwich ELISA.

Capture antibody: IL-12/IL-23 p40 Recombinant antibody, PBS Only (Capture) 83008-5-PBS (241600F8). 100 µg. Concentration 1 mg/mL.

Detection antibody: IL-12/IL-23 p40 Recombinant antibody, PBS Only (Detector) 83008-6-PBS (241600G10). 100 µg. Concentration 1 mg/mL.

Unconjugated rabbit recombinant monoclonal antibody pair in PBS only storage buffer at a concentration of 1 mg/mL, ready for conjugation. Created using Proteintech's proprietary in-house recombinant technology. Recombinant production enables unrivalled batch-to-batch consistency, easy scale-up, and future security of supply.

Matched antibody pairs are designed for use in a variety of assays and platforms that require matched antibody pairs.

Antibody use should be optimized for each application and assay.

Storage

Storage:
Store at -80°C.

The product is shipped with ice packs. Upon receipt, store it immediately at -80°C

Storage buffer:
PBS only

For technical support and original validation data for this product please contact:

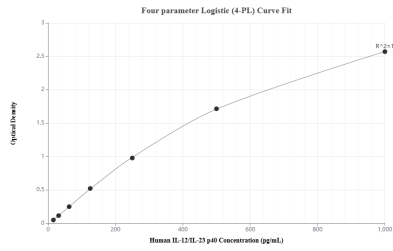
T: 4006900926

E: Proteintech-CN@ptglab.com

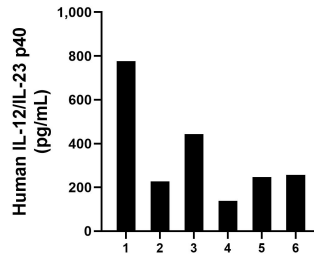
W: ptgcn.com

This product is exclusively available under Proteintech Group brand and is not available to purchase from any other manufacturer.

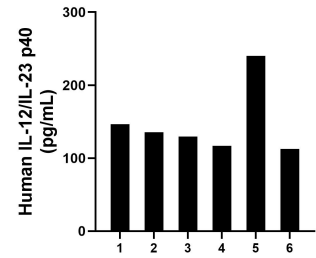
Selected Validation Data



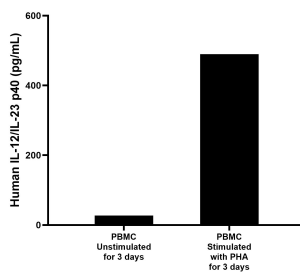
Sandwich ELISA standard curve of MP00035-4, Human IL-12/IL-23 p40 Recombinant Matched Antibody Pair - PBS only. 83008-5-PBS was coated to a plate as the capture antibody and incubated with serial dilutions of standard Eg0431. 83008-6-PBS was HRP conjugated as the detection antibody. Range: 15.6-1000 pg/mL



Serum of six individual healthy human donors was measured. The human IL-12/IL-23 p40 concentration of detected samples was determined to be 348.4 pg/mL with a range of 138.9 - 776.9 pg/mL.



Plasma of six individual healthy human donors was measured. The human IL-12/IL-23 p40 concentration of detected samples was determined to be 146.9 pg/mL with a range of 112.74 - 240.1 pg/mL.



Human peripheral blood mononuclear cells (PBMC) were cultured unstimulated or stimulated with 10 μ g/mL PHA for 3 days. The mean IL-12/IL-23 p40 concentration was determined to be 27.3 pg/mL in unstimulated PBMC supernatant, 489.4 pg/mL in PHA stimulated PBMC supernatant.