

For Research Use Only

SLC25A3 Recombinant Matched Antibody Pair, PBS Only



Catalog Number:MP00046-2

Capture Antibody Information

Catalog Number:
82988-3-PBS

Host:
Rabbit

Isotype:
IgG

Purification Method:
Protein A purification

Clone ID:
230054D6

Reactivity:
Human

GenBank:
BC003504

Immunogen Catalog Number:
Ag0667

Conjugate:
Unconjugated

Full name:
solute carrier family 25
(mitochondrial carrier; phosphate
carrier), member 3

Gene ID:
5250

Detection Antibody Information

Catalog Number:
82988-2-PBS

Host:
Rabbit

Isotype:
IgG

Purification Method:
Protein A purification

Clone ID:
230054A11

Reactivity:
Human

GenBank:
BC003504

Immunogen Catalog Number:
Ag0667

Conjugate:
Unconjugated

Full name:
solute carrier family 25
(mitochondrial carrier; phosphate
carrier), member 3

Gene ID:
5250

Applications

Tested Applications:
Cytometric bead array

Range:
0.313-20 ng/mL (Cytometric Bead
Array)

Recommended Dilutions:
It is recommended that this reagent
should be titrated in each testing
system to obtain optimal results.

Product Information

MP00046-2 targets SLC25A3 in immunoassays as a matched antibody pair. Validated in Cytometric bead array.

Capture antibody: SLC25A3 Recombinant antibody, PBS Only (Capture) 82988-3-PBS (230054D6). 100 μ g. Concentration 1 mg/ml.

Detection antibody: SLC25A3 Recombinant antibody, PBS Only (Detector) 82988-2-PBS (230054A11). 100 μ g. Concentration 1 mg/ml.

Alternative SLC25A3 matched antibody pairs: MP00046-1, MP00046-3

Unconjugated rabbit recombinant monoclonal antibody pair in PBS only (BSA and azide free) storage buffer at a concentration of 1 mg/mL, ready for conjugation. Created using Proteintech's proprietary in-house recombinant technology. Recombinant production enables unrivalled batch-to-batch consistency, easy scale-up, and future security of supply.

Matched antibody pairs are designed for use in a variety of assays and platforms that require matched antibody pairs.

Antibody use should be optimized for each application and assay.

Storage

Storage:
Store at -80°C.
Storage buffer:
PBS only

For technical support and original validation data for this product please contact:

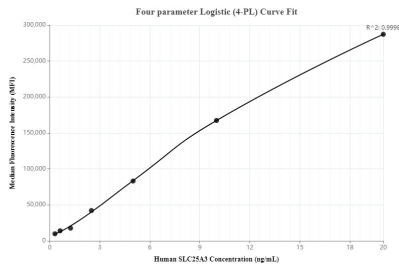
T: 4006900926

E: Proteintech-CN@ptglab.com

W: ptgcn.com

This product is exclusively available under Proteintech Group brand and is not available to purchase from any other manufacturer.

Selected Validation Data



Cytometric bead array standard curve of MP00046-2, SLC25A3 Recombinant Matched Antibody Pair, PBS Only. Capture antibody: 82988-3-PBS. Detection antibody: 82988-2-PBS. Standard: Ag0667. Range: 0.313-20 ng/mL.