

For Research Use Only

RORA Recombinant Matched Antibody Pair, PBS Only



Catalog Number:MP00055-1

Capture Antibody Information

Catalog Number:
82930-3-PBS

Host:
Rabbit

Isotype:
IgG

Purification Method:
Protein A purification

Clone ID:
230217B2

Reactivity:
Human

GenBank:
BC008831

Immunogen Catalog Number:
Ag0944

Conjugate:
Unconjugated

Full name:
RAR-related orphan receptor A

Gene ID:
6095

Detection Antibody Information

Catalog Number:
82930-5-PBS

Host:
Rabbit

Isotype:
IgG

Purification Method:
Protein A purification

Clone ID:
230217D11

Reactivity:
Human

GenBank:
BC008831

Immunogen Catalog Number:
Ag0944

Conjugate:
Unconjugated

Full name:
RAR-related orphan receptor A

Gene ID:
6095

Applications

Tested Applications:
Cytometric bead array

Range:
0.625-20 ng/mL (Cytometric Bead Array)

Recommended Dilutions:
It is recommended that this reagent should be titrated in each testing system to obtain optimal results.

Product Information

MP00055-1 targets RORA in immunoassays as a matched antibody pair. Validated in Cytometric bead array.

Capture antibody: RORA Recombinant antibody, PBS Only (Capture) 82930-3-PBS (230217B2). 100 µg. Concentration 1 mg/mL.

Detection antibody: RORA Recombinant antibody, PBS Only (Detector) 82930-5-PBS (230217D11). 100 µg. Concentration 1 mg/mL.

Alternative RORA matched antibody pairs: MP00055-2, MP00055-3

Unconjugated rabbit recombinant monoclonal antibody pair in PBS only (BSA and azide free) storage buffer at a concentration of 1 mg/mL, ready for conjugation. Created using Proteintech's proprietary in-house recombinant technology. Recombinant production enables unrivalled batch-to-batch consistency, easy scale-up, and future security of supply.

Matched antibody pairs are designed for use in a variety of assays and platforms that require matched antibody pairs.

Antibody use should be optimized for each application and assay.

Storage

Storage:
Store at -80°C.
Storage buffer:
PBS only

For technical support and original validation data for this product please contact:

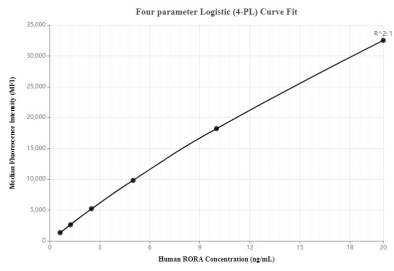
T: 4006900926

E: Proteintech-CN@ptglab.com

W: ptgcn.com

This product is exclusively available under Proteintech Group brand and is not available to purchase from any other manufacturer.

Selected Validation Data



Cytometric bead array standard curve of MP00055-1, RORA Recombinant Matched Antibody Pair, PBS Only. Capture antibody: 82930-3-PBS. Detection antibody: 82930-5-PBS. Standard: Ag0944. Range: 0.625-20 ng/mL