

For Research Use Only

# Cytokeratin 13 Recombinant Matched Antibody Pair, PBS Only



Catalog Number:MP00074-2

## Capture Antibody Information

**Catalog Number:**  
83058-1-PBS  
**Host:**  
Rabbit  
**Isotype:**  
IgG  
**Purification Method:**  
Protein A purification

**Clone ID:**  
230366B10  
**Reactivity:**  
human, mouse, rat  
**GenBank:**  
BC002661  
**Immunogen Catalog Number:**  
Ag0217

**Conjugate:**  
Unconjugated  
**Full name:**  
keratin 13  
**Gene ID:**  
3860

## Detection Antibody Information

**Catalog Number:**  
83058-5-PBS  
**Host:**  
Rabbit  
**Isotype:**  
IgG  
**Purification Method:**  
Protein A purification

**Clone ID:**  
230366C3  
**Reactivity:**  
human  
**GenBank:**  
BC002661  
**Immunogen Catalog Number:**  
Ag0217

**Conjugate:**  
Unconjugated  
**Full name:**  
keratin 13  
**Gene ID:**  
3860

## Applications

**Tested Applications:**  
Sandwich ELISA

**Range:**  
0.313-20 ng/mL (Sandwich ELISA)

**Recommended Dilutions:**  
It is recommended that this reagent should be titrated in each testing system to obtain optimal results.

## Product Information

MP00074-2 targets Cytokeratin 13 in immunoassays as a matched antibody pair. Validated in Sandwich ELISA.

Capture antibody: Cytokeratin 13 Recombinant antibody, PBS Only (Capture) 83058-1-PBS (230366B10). 100 µg. Concentration 1 mg/ml.

Detection antibody: KRT13 Recombinant antibody, PBS Only (Detector) 83058-5-PBS (230366C3). 100 µg. Concentration 1 mg/ml.

Alternative Cytokeratin 13 matched antibody pairs: MP00074-1

Unconjugated rabbit recombinant monoclonal antibody pair in PBS only storage buffer at a concentration of 1 mg/mL, ready for conjugation. Created using Proteintech's proprietary in-house recombinant technology. Recombinant production enables unrivalled batch-to-batch consistency, easy scale-up, and future security of supply.

Matched antibody pairs are designed for use in a variety of assays and platforms that require matched antibody pairs.

Antibody use should be optimized for each application and assay.

## Storage

**Storage:**  
Store at -80°C.  
**The product is shipped with ice packs. Upon receipt, store it immediately at -80°C**  
**Storage buffer:**  
PBS only

For technical support and original validation data for this product please contact:

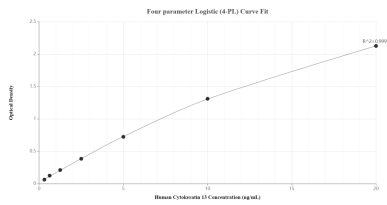
T: 4006900926

E: [Proteintech-CN@ptglab.com](mailto:Proteintech-CN@ptglab.com)

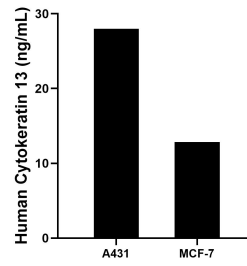
W: [ptgcn.com](http://ptgcn.com)

**This product is exclusively available under Proteintech Group brand and is not available to purchase from any other manufacturer.**

## Selected Validation Data



Sandwich ELISA standard curve of MP00074-2, Human Cytokeratin 13 Recombinant Matched Antibody Pair - PBS only. 83058-1-PBS was coated to a plate as the capture antibody and incubated with serial dilutions of standard Ag0217. 83058-5-PBS was HRP conjugated as the detection antibody. Range: 0.313-20 ng/mL



The mean Cytokeratin 13 concentration was determined to be 28.00 ng/mL in A431 cell extract based on a 1.50 mg/mL extract load and 12.84 ng/mL in MCF-7 cell extract based on a 1.20 mg/mL extract load.