

# TAB2 Recombinant Matched Antibody Pair, PBS Only

Catalog Number:MP00082-2

## Capture Antibody Information

**Catalog Number:**  
82948-4-PBS  
**Host:**  
Rabbit  
**Isotype:**  
IgG  
**Purification Method:**  
Protein A purification

**Clone ID:**  
230118C8  
**Reactivity:**  
Human  
**GenBank:**  
BC035910  
**Immunogen Catalog Number:**  
Ag5742

**Conjugate:**  
Unconjugated  
**Full name:**  
mitogen-activated protein kinase kinase kinase 7 interacting protein 2  
**Gene ID:**  
23118

## Detection Antibody Information

**Catalog Number:**  
82948-2-PBS  
**Host:**  
Rabbit  
**Isotype:**  
IgG  
**Purification Method:**  
Protein A purification

**Clone ID:**  
230118C2  
**Reactivity:**  
Human  
**GenBank:**  
BC035910  
**Immunogen Catalog Number:**  
Ag5742

**Conjugate:**  
Unconjugated  
**Full name:**  
mitogen-activated protein kinase kinase kinase 7 interacting protein 2  
**Gene ID:**  
23118

## Applications

**Tested Applications:**  
Cytometric bead array

**Range:**  
0.625-20 ng/mL (Cytometric Bead Array)

**Recommended Dilutions:**  
It is recommended that this reagent should be titrated in each testing system to obtain optimal results.

## Product Information

MP00082-2 targets TAB2 in immunoassays as a matched antibody pair. Validated in Cytometric bead array.

Capture antibody: MAP3K7IP2 Recombinant antibody, PBS Only (Capture) 82948-4-PBS (230118C8). 100 µg. Concentration 1 mg/mL.

Detection antibody: MAP3K7IP2 Recombinant antibody, PBS Only (Detector) 82948-2-PBS (230118C2). 100 µg. Concentration 1 mg/mL.

Alternative TAB2 matched antibody pairs: MP00082-1, MP00082-3

Unconjugated rabbit recombinant monoclonal antibody pair in PBS only (BSA and azide free) storage buffer at a concentration of 1 mg/mL, ready for conjugation. Created using Proteintech's proprietary in-house recombinant technology. Recombinant production enables unrivalled batch-to-batch consistency, easy scale-up, and future security of supply.

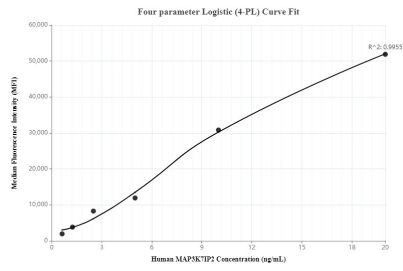
Matched antibody pairs are designed for use in a variety of assays and platforms that require matched antibody pairs.

Antibody use should be optimized for each application and assay.

## Storage

**Storage:**  
Store at -80°C.  
**Storage buffer:**  
PBS only

## Selected Validation Data



Cytometric bead array standard curve of MP00082-2, TAB2 Recombinant Matched Antibody Pair, PBS Only. Capture antibody: 82948-4-PBS. Detection antibody: 82948-2-PBS. Standard: Ag5742. Range: 0.625-20 ng/mL