

TAB2 Recombinant Matched Antibody Pair, PBS Only

Catalog Number: MP00082-3

Capture Antibody Information

Catalog Number:
82948-3-PBS
Host:
Rabbit
Isotype:
IgG
Purification Method:
Protein A purification

Clone ID:
230118C6
Reactivity:
Human
GenBank:
BC035910
Immunogen Catalog Number:
Ag5742

Conjugate:
Unconjugated
Full name:
mitogen-activated protein kinase kinase kinase 7 interacting protein 2
Gene ID:
23118

Detection Antibody Information

Catalog Number:
82948-1-PBS
Host:
Rabbit
Isotype:
IgG
Purification Method:
Protein A purification

Clone ID:
230118G2
Reactivity:
Human, mouse
GenBank:
BC035910
Immunogen Catalog Number:
Ag5742

Conjugate:
Unconjugated
Full name:
mitogen-activated protein kinase kinase kinase 7 interacting protein 2
Gene ID:
23118

Applications

Tested Applications:
Cytometric bead array

Range:
0.625-20 ng/mL (Cytometric Bead Array)

Recommended Dilutions:
It is recommended that this reagent should be titrated in each testing system to obtain optimal results.

Product Information

MP00082-3 targets TAB2 in immunoassays as a matched antibody pair. Validated in Cytometric bead array.

Capture antibody: MAP3K7IP2 Recombinant antibody, PBS Only (Capture) 82948-3-PBS (230118C6). 100 µg. Concentration 1 mg/mL.

Detection antibody: MAP3K7IP2 Recombinant antibody, PBS Only (Detector) 82948-1-PBS (230118G2). 100 µg. Concentration 1 mg/mL.

Alternative TAB2 matched antibody pairs: MP00082-1, MP00082-2

Unconjugated rabbit recombinant monoclonal antibody pair in PBS only (BSA and azide free) storage buffer at a concentration of 1 mg/mL, ready for conjugation. Created using Proteintech's proprietary in-house recombinant technology. Recombinant production enables unrivalled batch-to-batch consistency, easy scale-up, and future security of supply.

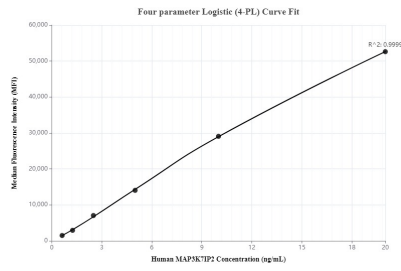
Matched antibody pairs are designed for use in a variety of assays and platforms that require matched antibody pairs.

Antibody use should be optimized for each application and assay.

Storage

Storage:
Store at -80°C.
Storage buffer:
PBS only

Selected Validation Data



Cytometric bead array standard curve of MP00082-3, TAB2 Recombinant Matched Antibody Pair, PBS Only. Capture antibody: 82948-3-PBS. Detection antibody: 82948-1-PBS. Standard: Ag5742. Range: 0.625-20 ng/mL