

For Research Use Only

# ENG Recombinant Matched Antibody Pair, PBS Only



Catalog Number:MP00089-2

## Capture Antibody Information

Catalog Number:  
82993-4-PBS

Host:  
Rabbit

Isotype:  
IgG

Purification Method:  
Protein A purification

Clone ID:  
230047H5

Reactivity:  
Human

GenBank:  
BC014271

Conjugate:  
Unconjugated

Full name:  
endoglin

Gene ID:  
2022

## Detection Antibody Information

Catalog Number:  
82993-3-PBS

Host:  
Rabbit

Isotype:  
IgG

Purification Method:  
Protein A purification

Clone ID:  
230047C7

Reactivity:  
Human

GenBank:  
BC014271

Conjugate:  
Unconjugated

Full name:  
endoglin

Gene ID:  
2022

## Applications

Tested Applications:  
Cytometric bead array, Sandwich ELISA

Range:  
2.5-20 ng/mL (Cytometric Bead Array)  
0.156-10 ng/mL (Sandwich ELISA)

Recommended Dilutions:  
It is recommended that this reagent should be titrated in each testing system to obtain optimal results.

## Product Information

MP00089-2 targets ENG in immunoassays as a matched antibody pair. Validated in Cytometric bead array, Sandwich ELISA.

Capture antibody: Endoglin/CD105 Recombinant antibody, PBS Only (Capture) 82993-4-PBS (230047H5). 100 µg. Concentration 1 mg/ml.

Detection antibody: Endoglin/CD105 Recombinant antibody, PBS Only (Detector) 82993-3-PBS (230047C7). 100 µg. Concentration 1 mg/ml.

Alternative ENG matched antibody pairs: MP00089-1, MP50103-1

Unconjugated rabbit recombinant monoclonal antibody pair in PBS only (BSA and azide free) storage buffer at a concentration of 1 mg/mL, ready for conjugation. Created using Proteintech's proprietary in-house recombinant technology. Recombinant production enables unrivalled batch-to-batch consistency, easy scale-up, and future security of supply.

Matched antibody pairs are designed for use in a variety of assays and platforms that require matched antibody pairs.

Antibody use should be optimized for each application and assay.

## Storage

Storage:  
Store at -80°C.  
Storage buffer:  
PBS only

For technical support and original validation data for this product please contact:

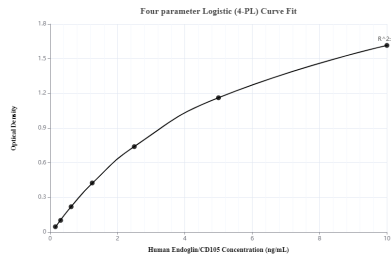
T: 4006900926

E: Proteintech-CN@ptglab.com

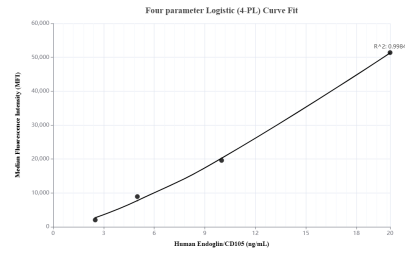
W: ptgcn.com

This product is exclusively available under Proteintech Group brand and is not available to purchase from any other manufacturer.

## Selected Validation Data



Sandwich ELISA standard curve of MP00089-2, ENG Recombinant Matched Antibody Pair, PBS Only. Capture antibody: 82993-4-PBS. Detection antibody: 82993-3-PBS. Standard: Eg0587. Range: 0.156-10 ng/mL



Cytometric bead array standard curve of MP00089-2, ENG Recombinant Matched Antibody Pair, PBS Only. Capture antibody: 82993-4-PBS. Detection antibody: 82993-3-PBS. Standard: Eg0587. Range: 2.5-20 ng/mL