

TRPS1 Recombinant Matched Antibody Pair, PBS Only

Catalog Number:MP00096-1

Capture Antibody Information

| | | |
|---|---|--|
| Catalog Number: 83062-1-PBS | Clone ID: 230051F11 | Conjugate: Unconjugated |
| Host: Rabbit | Reactivity: human | Full name: trichorhinophalangeal syndrome I |
| Isotype: IgG | GenBank: BC125020 | Gene ID: 7227 |
| Purification Method: Protein A purification | Immunogen Catalog Number: Ag33959 | Affinity: $K_D = 5.92 \times 10^{-10}$ $K_{Off} = 1.98 \times 10^{-4}$ $K_{On} = 3.35 \times 10^5$ |

Detection Antibody Information

| | | |
|---|---|--|
| Catalog Number: 83062-3-PBS | Clone ID: 230051G2 | Conjugate: Unconjugated |
| Host: Rabbit | Reactivity: human | Full name: trichorhinophalangeal syndrome I |
| Isotype: IgG | GenBank: BC125020 | Gene ID: 7227 |
| Purification Method: Protein A purification | Immunogen Catalog Number: Ag33959 | Affinity: $K_D = 2.32 \times 10^{-10}$ $K_{Off} = 3.42 \times 10^{-5}$ $K_{On} = 1.48 \times 10^5$ |

Applications

| | | |
|--|---|---|
| Tested Applications: Cytometric bead array, Sandwich ELISA | Range: 0.625-20 ng/mL (Cytometric Bead Array) 39.1-2500 pg/mL (Sandwich ELISA) | Recommended Dilutions: It is recommended that this reagent should be titrated in each testing system to obtain optimal results. |
|--|---|---|

Product Information

MP00096-1 targets TRPS1 in immunoassays as a matched antibody pair. Validated in Cytometric bead array, Sandwich ELISA.

Capture antibody: TRPS1 Recombinant antibody, PBS Only (Capture/Detector) 83062-1-PBS (230051F11). 100 µg. Concentration 1 mg/ml.

Detection antibody: TRPS1 Recombinant antibody, PBS Only (Detector) 83062-3-PBS (230051G2). 100 µg. Concentration 1 mg/ml.

Unconjugated rabbit recombinant monoclonal antibody pair in PBS only storage buffer at a concentration of 1 mg/mL, ready for conjugation. Created using Proteintech's proprietary in-house recombinant technology. Recombinant production enables unrivalled batch-to-batch consistency, easy scale-up, and future security of supply.

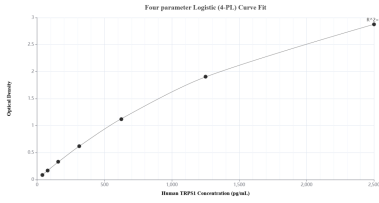
Matched antibody pairs are designed for use in a variety of assays and platforms that require matched antibody pairs.

Antibody use should be optimized for each application and assay.

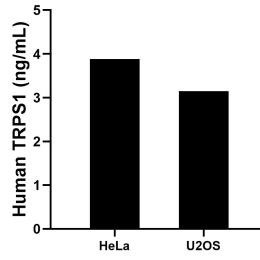
Storage

Storage:
Store at -80°C.
The product is shipped with ice packs. Upon receipt, store it immediately at -80°C
Storage buffer:
PBS only

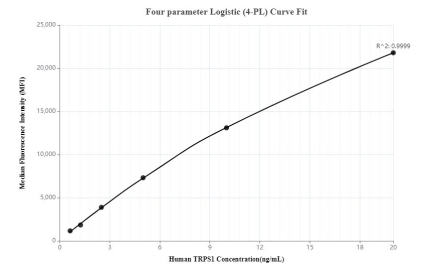
Selected Validation Data



Sandwich ELISA standard curve of MP00096-1, Human TRPS1 Recombinant Matched Antibody Pair - PBS only. 83062-1-PBS was coated to a plate as the capture antibody and incubated with serial dilutions of standard Ag33959. 83062-3-PBS was HRP conjugated as the detection antibody. Range: 39.1-2500 pg/mL



The mean TRPS1 concentration was determined to be 3.9 ng/mL in HeLa cell extract based on a 1.0 mg/mL extract load and 3.2 ng/mL in U2OS cell extract based on a 3.5 mg/mL extract load.



Cytometric bead array standard curve of MP00096-1, TRPS1 Recombinant Matched Antibody Pair - PBS only. Capture antibody: 83062-1-PBS. Detection antibody: 83062-3-PBS. Standard: Ag33959. Range: 0.625-20 ng/mL