

CTNNBIP1 Recombinant Matched Antibody Pair, PBS Only

Catalog Number:MP00102-1

Capture Antibody Information

Catalog Number:
82914-4-PBS
Host:
Rabbit
Isotype:
IgG
Purification Method:
Protein A purification

Clone ID:
230164G4
Reactivity:
human
GenBank:
BC014300
Immunogen Catalog Number:
Ag13160

Conjugate:
Unconjugated
Full name:
catenin, beta interacting protein 1
Gene ID:
56998

Detection Antibody Information

Catalog Number:
82914-2-PBS
Host:
Rabbit
Isotype:
IgG
Purification Method:
Protein A purification

Clone ID:
230164B3
Reactivity:
human
GenBank:
BC014300
Immunogen Catalog Number:
Ag13160

Conjugate:
Unconjugated
Full name:
catenin, beta interacting protein 1
Gene ID:
56998

Applications

Tested Applications:
Cytometric bead array, Sandwich ELISA

Range:
0.313-20 ng/mL (Cytometric Bead Array)
39.1-2500 pg/mL (Sandwich ELISA)

Recommended Dilutions:
It is recommended that this reagent should be titrated in each testing system to obtain optimal results.

Product Information

MP00102-1 targets CTNNBIP1 in immunoassays as a matched antibody pair. Validated in Cytometric bead array, Sandwich ELISA.

Capture antibody: CTNNBIP1 Recombinant antibody, PBS Only (Capture) 82914-4-PBS (230164G4). 100 µg. Concentration 1 mg/ml.

Detection antibody: CTNNBIP1 Recombinant antibody, PBS Only (Detector) 82914-2-PBS (230164B3). 100 µg. Concentration 1 mg/ml.

Alternative CTNNBIP1 matched antibody pairs: MP00102-2, MP00102-3

Unconjugated rabbit recombinant monoclonal antibody pair in PBS only storage buffer at a concentration of 1 mg/mL, ready for conjugation. Created using Proteintech's proprietary in-house recombinant technology. Recombinant production enables unrivalled batch-to-batch consistency, easy scale-up, and future security of supply.

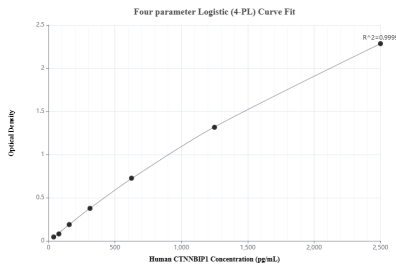
Matched antibody pairs are designed for use in a variety of assays and platforms that require matched antibody pairs.

Antibody use should be optimized for each application and assay.

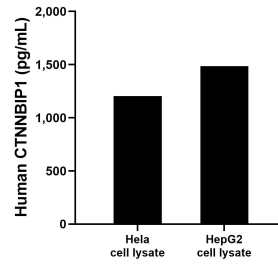
Storage

Storage:
Store at -80°C.
The product is shipped with ice packs. Upon receipt, store it immediately at -80°C
Storage buffer:
PBS only

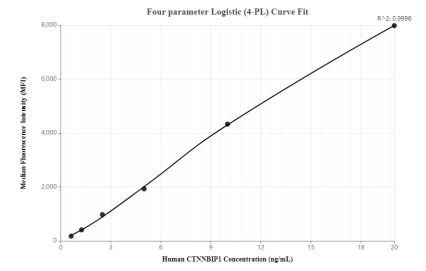
Selected Validation Data



Sandwich ELISA standard curve of MP00102-1, Human CTNNBIP1 Recombinant Matched Antibody Pair - PBS only. 82914-4-PBS was coated to a plate as the capture antibody and incubated with serial dilutions of standard Ag13160. 82914-2-PBS was HRP conjugated as the detection antibody. Range: 39.1-2500 pg/mL



HeLa and HepG2 cell lysates were measured. The human CTNNBIP1 concentration of detected samples was determined to be 1,205.0 pg/mL (based on a 1.50 mg/mL extract load) in HeLa cell lysate and 1486.5 pg/mL (based on a 1.20 mg/mL extract load) in HepG2 cell lysate.



Cytometric bead array standard curve of MP00102-1, CTNNBIP1 Recombinant Matched Antibody Pair, PBS Only. Capture antibody: 82914-4-PBS. Detection antibody: 82914-2-PBS. Standard: Ag13160. Range: 0.313-20 ng/mL