

For Research Use Only

CCR5 Recombinant Matched Antibody Pair, PBS Only



Catalog Number:MP00125-4

Capture Antibody Information

Catalog Number:
82942-2-PBS
Host:
Rabbit
Isotype:
IgG
Purification Method:
Protein A purification

Clone ID:
230266A9
Reactivity:
human
GenBank:
BC038398
Immunogen Catalog Number:
Ag11493

Conjugate:
Unconjugated
Full name:
chemokine (C-C motif) receptor 5
Gene ID:
1234

Detection Antibody Information

Catalog Number:
82942-6-PBS
Host:
Rabbit
Isotype:
IgG
Purification Method:
Protein A purification

Clone ID:
230266E2
Reactivity:
human
GenBank:
BC038398
Immunogen Catalog Number:
Ag11493

Conjugate:
Unconjugated
Full name:
chemokine (C-C motif) receptor 5
Gene ID:
1234

Applications

Tested Applications:
Sandwich ELISA

Range:
0.625-40 ng/mL (Sandwich ELISA)

Recommended Dilutions:
It is recommended that this reagent should be titrated in each testing system to obtain optimal results.

Product Information

MP00125-4 targets CCR5 in immunoassays as a matched antibody pair. Validated in Sandwich ELISA.

Capture antibody: CCR5 Recombinant antibody, PBS Only (Capture) 82942-2-PBS (230266A9). 100 µg. Concentration 1 mg/ml.

Detection antibody: CCR5 Recombinant antibody, PBS Only (Detector) 82942-6-PBS (230266E2). 100 µg. Concentration 1 mg/ml.

Alternative CCR5 matched antibody pairs: MP00125-1, MP00125-2, MP00125-3

Unconjugated rabbit recombinant monoclonal antibody pair in PBS only storage buffer at a concentration of 1 mg/mL, ready for conjugation. Created using Proteintech's proprietary in-house recombinant technology. Recombinant production enables unrivalled batch-to-batch consistency, easy scale-up, and future security of supply.

Matched antibody pairs are designed for use in a variety of assays and platforms that require matched antibody pairs.

Antibody use should be optimized for each application and assay.

Storage

Storage:
Store at -80°C.
The product is shipped with ice packs. Upon receipt, store it immediately at -80°C
Storage buffer:
PBS only

For technical support and original validation data for this product please contact:

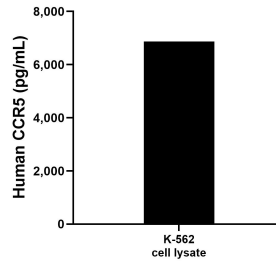
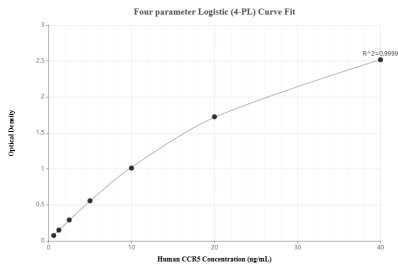
T: 4006900926

E: Proteintech-CN@ptglab.com

W: ptgcn.com

This product is exclusively available under Proteintech Group brand and is not available to purchase from any other manufacturer.

Selected Validation Data



Sandwich ELISA standard curve of MP00125-4, Human CCR5 Recombinant Matched Antibody Pair - PBS only. 82942-2-PBS was coated to a plate as the capture antibody and incubated with serial dilutions of standard Ag11493. 82942-6-PBS was HRP conjugated as the detection antibody. Range: 0.625-40 ng/mL

K-562 cell lysate was measured. The human CCR5 concentration of detected samples was determined to be 6,872.7 pg/mL (based on a 2.1 mg/mL extract load) in K-562 cell lysate.