

For Research Use Only

# SCN3B Recombinant Matched Antibody Pair, PBS Only



Catalog Number:MP00132-4

## Capture Antibody Information

**Catalog Number:**  
82959-2-PBS  
**Host:**  
Rabbit  
**Isotype:**  
IgG  
**Purification Method:**  
Protein A purification

**Clone ID:**  
230316A4  
**Reactivity:**  
human  
**GenBank:**  
BC126265  
**Immunogen Catalog Number:**  
Ag23201

**Conjugate:**  
Unconjugated  
**Full name:**  
sodium channel, voltage-gated, type III, beta  
**Gene ID:**  
55800

## Detection Antibody Information

**Catalog Number:**  
82959-8-PBS  
**Host:**  
Rabbit  
**Isotype:**  
IgG  
**Purification Method:**  
Protein A purification

**Clone ID:**  
230316B7  
**Reactivity:**  
human  
**GenBank:**  
BC126265  
**Immunogen Catalog Number:**  
Ag23201

**Conjugate:**  
Unconjugated  
**Full name:**  
sodium channel, voltage-gated, type III, beta  
**Gene ID:**  
55800

## Applications

**Tested Applications:**  
Sandwich ELISA

**Range:**  
0.156-10 ng/mL (Sandwich ELISA)

**Recommended Dilutions:**  
It is recommended that this reagent should be titrated in each testing system to obtain optimal results.

## Product Information

MP00132-4 targets SCN3B in immunoassays as a matched antibody pair. Validated in Sandwich ELISA.

Capture antibody: SCN3B Recombinant antibody, PBS Only (Capture) 82959-2-PBS (230316A4). 100 µg. Concentration 1 mg/ml.

Detection antibody: SCN3B Recombinant antibody, PBS Only (Detector) 82959-8-PBS (230316B7). 100 µg. Concentration 1 mg/ml.

Alternative SCN3B matched antibody pairs: MP00132-1, MP00132-2, MP00132-3

Unconjugated rabbit recombinant monoclonal antibody pair in PBS only storage buffer at a concentration of 1 mg/mL, ready for conjugation. Created using Proteintech's proprietary in-house recombinant technology. Recombinant production enables unrivalled batch-to-batch consistency, easy scale-up, and future security of supply.

Matched antibody pairs are designed for use in a variety of assays and platforms that require matched antibody pairs.

Antibody use should be optimized for each application and assay.

## Storage

**Storage:**  
Store at -80°C.  
**The product is shipped with ice packs. Upon receipt, store it immediately at -80°C**  
**Storage buffer:**  
PBS only

For technical support and original validation data for this product please contact:

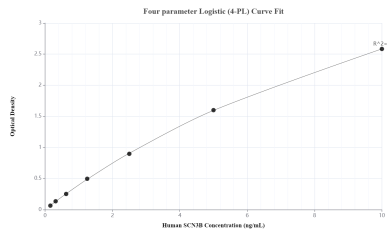
T: 4006900926

E: [Proteintech-CN@ptglab.com](mailto:Proteintech-CN@ptglab.com)

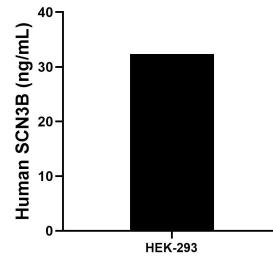
W: [ptgcn.com](http://ptgcn.com)

**This product is exclusively available under Proteintech Group brand and is not available to purchase from any other manufacturer.**

## Selected Validation Data



Sandwich ELISA standard curve of MP00132-4, Human SCN3B Recombinant Matched Antibody Pair - PBS only. 82959-2-PBS was coated to a plate as the capture antibody and incubated with serial dilutions of standard Ag23201. 82959-8-PBS was HRP conjugated as the detection antibody. Range: 0.156-10 ng/mL



The mean SCN3B concentration was determined to be 32.36 ng/mL in HEK-293 cell extract based on a 3.40 mg/mL extract load.