

For Research Use Only

Mouse MCP-1/CCL2 Recombinant Matched Antibody Pair, PBS Only



Catalog Number:MP00168-4

Capture Antibody Information

Catalog Number:
83157-6-PBS

Host:
Rabbit

Isotype:
IgG

Purification Method:
Protein A purification

Clone ID:
230483B2

Reactivity:
mouse

GenBank:
NM-011333

Conjugate:
Unconjugated

Full name:
chemokine (C-C motif) ligand 2

Gene ID:
20296

Detection Antibody Information

Catalog Number:
83157-4-PBS

Host:
Rabbit

Isotype:
IgG

Purification Method:
Protein A purification

Clone ID:
230483H3

Reactivity:
mouse

GenBank:
NM-011333

Conjugate:
Unconjugated

Full name:
chemokine (C-C motif) ligand 2

Gene ID:
20296

Applications

Tested Applications:
Sandwich ELISA

Range:
15.6-1000 pg/mL (Sandwich ELISA)

Recommended Dilutions:
It is recommended that this reagent should be titrated in each testing system to obtain optimal results.

Product Information

MP00168-4 targets MCP-1/CCL2 in immunoassays as a matched antibody pair. Validated in Sandwich ELISA.

Capture antibody: Mouse MCP-1/CCL2 Recombinant antibody, PBS Only (Capture) 83157-6-PBS (230483B2). 100 µg. Concentration 1 mg/ml.

Detection antibody: Mouse MCP-1/CCL2 Recombinant antibody, PBS Only (Capture/Detector) 83157-4-PBS (230483H3). 100 µg. Concentration 1 mg/ml.

Alternative MCP-1/CCL2 matched antibody pairs: MP00168-1, MP00168-2, MP00168-3, MP00390-1, MP00390-2, MP00390-3, MP00938-1, MP00938-2, MP00938-3

Unconjugated rabbit recombinant monoclonal antibody pair in PBS only storage buffer at a concentration of 1 mg/mL, ready for conjugation. Created using Proteintech's proprietary in-house recombinant technology. Recombinant production enables unrivalled batch-to-batch consistency, easy scale-up, and future security of supply.

Matched antibody pairs are designed for use in a variety of assays and platforms that require matched antibody pairs.

Antibody use should be optimized for each application and assay.

Storage

Storage:
Store at -80°C.

The product is shipped with ice packs. Upon receipt, store it immediately at -80°C

Storage buffer:
PBS only

For technical support and original validation data for this product please contact:

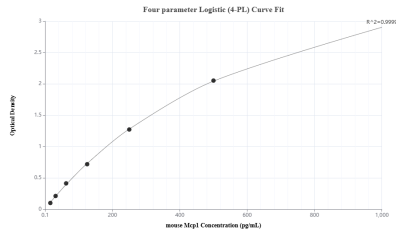
T: 4006900926

E: Proteintech-CN@ptglab.com

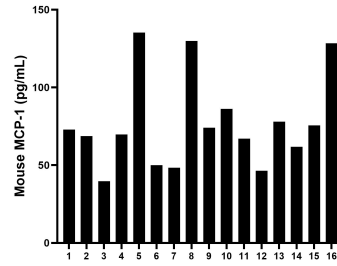
W: ptgcn.com

This product is exclusively available under Proteintech Group brand and is not available to purchase from any other manufacturer.

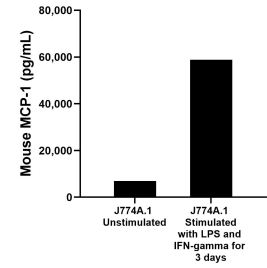
Selected Validation Data



Sandwich ELISA standard curve of MP00168-4, Mouse MCP-1 Recombinant Matched Antibody Pair - PBS only. 83157-6-PBS was coated to a plate as the capture antibody and incubated with serial dilutions of standard Eg0427. 83157-4-PBS was HRP conjugated as the detection antibody. Range: 15.6-1000 pg/mL



Serum of sixteen mice was measured. The MCP-1 concentration of detected samples was determined to be 77.0 pg/mL with a range of 39.7 - 135.3 pg/mL



J774A.1 mouse reticulum cell sarcoma macrophage cells (1×10^6 cells/mL) were cultured for 3 days in DMEM containing 10% fetal bovine serum. Cells were untreated or treated with 500 ng/mL recombinant mouse IFN- γ and 10 ng/mL LPS. An aliquot of the cell culture supernatants were removed, assayed for mouse MCP-1, and measured 6,956.6 pg/mL and 58,869.9 pg/mL