

For Research Use Only

NSD3 Recombinant Matched Antibody Pair, PBS Only



Catalog Number:MP00189-4

Capture Antibody Information

Catalog Number:
83116-2-PBS
Host:
Rabbit
Isotype:
IgG
Purification Method:
Protein A purification

Clone ID:
230499C2
Reactivity:
human
GenBank:
BC012059
Immunogen Catalog Number:
Ag1894

Conjugate:
Unconjugated
Full name:
Wolf-Hirschhorn syndrome candidate 1-like 1
Gene ID:
54904

Detection Antibody Information

Catalog Number:
83116-5-PBS
Host:
Rabbit
Isotype:
IgG
Purification Method:
Protein A purification

Clone ID:
230499C4
Reactivity:
human
GenBank:
BC012059
Immunogen Catalog Number:
Ag1894

Conjugate:
Unconjugated
Full name:
Wolf-Hirschhorn syndrome candidate 1-like 1
Gene ID:
54904

Applications

Tested Applications:
Sandwich ELISA

Range:
19.5-625 pg/mL (Sandwich ELISA)

Recommended Dilutions:
It is recommended that this reagent should be titrated in each testing system to obtain optimal results.

Product Information

MP00189-4 targets NSD3 in immunoassays as a matched antibody pair. Validated in Sandwich ELISA.

Capture antibody: NSD3 Recombinant antibody, PBS Only (Capture) 83116-2-PBS (230499C2). 100 µg. Concentration 1 mg/ml.

Detection antibody: WHSC1L1 Recombinant antibody, PBS Only (Detector) 83116-5-PBS (230499C4). 100 µg. Concentration 1 mg/ml.

Alternative NSD3 matched antibody pairs: MP00189-1, MP00189-2, MP00189-3

Unconjugated rabbit recombinant monoclonal antibody pair in PBS only storage buffer at a concentration of 1 mg/mL, ready for conjugation. Created using Proteintech's proprietary in-house recombinant technology. Recombinant production enables unrivalled batch-to-batch consistency, easy scale-up, and future security of supply.

Matched antibody pairs are designed for use in a variety of assays and platforms that require matched antibody pairs.

Antibody use should be optimized for each application and assay.

Storage

Storage:
Store at -80°C.
The product is shipped with ice packs. Upon receipt, store it immediately at -80°C
Storage buffer:
PBS only

For technical support and original validation data for this product please contact:

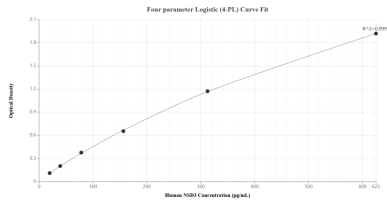
T: 4006900926

E: Proteintech-CN@ptglab.com

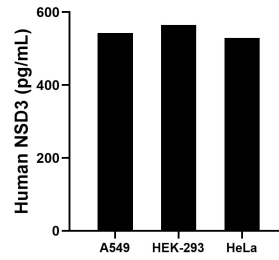
W: ptgcn.com

This product is exclusively available under Proteintech Group brand and is not available to purchase from any other manufacturer.

Selected Validation Data



Sandwich ELISA standard curve of MP00189-4, Human NSD3 Recombinant Matched Antibody Pair - PBS only. 83116-2-PBS was coated to a plate as the capture antibody and incubated with serial dilutions of standard Ag1894. 83116-5-PBS was HRP conjugated as the detection antibody. Range: 19.5-625 pg/mL



The mean NSD3 concentration was determined to be 542.5 pg/mL in A549 cell extract based on a 1.0 mg/mL extract load, 565.1 pg/mL in HEK-293 cell extract based on a 1.2 mg/mL extract load and 529.6 pg/mL in HeLa cell extract based on a 1.5 mg/mL extract load.