

For Research Use Only

NDUFB8 Recombinant Matched Antibody Pair, PBS Only



Catalog Number:MP00204-2

Capture Antibody Information

Catalog Number:
83216-6-PBS
Host:
Rabbit
Isotype:
IgG
Purification Method:
Protein A purification

Clone ID:
230510G8
Reactivity:
human
GenBank:
BC000466
Immunogen Catalog Number:
Ag6495

Conjugate:
Unconjugated
Full name:
NADH dehydrogenase (ubiquinone) 1 beta subcomplex, 8, 19kDa
Gene ID:
4714

Detection Antibody Information

Catalog Number:
83216-1-PBS
Host:
Rabbit
Isotype:
IgG
Purification Method:
Protein A purification

Clone ID:
230510E10
Reactivity:
human
GenBank:
BC000466
Immunogen Catalog Number:
Ag6495

Conjugate:
Unconjugated
Full name:
NADH dehydrogenase (ubiquinone) 1 beta subcomplex, 8, 19kDa
Gene ID:
4714

Applications

Tested Applications:
Sandwich ELISA

Range:
3.13-200 ng/mL (Sandwich ELISA)

Recommended Dilutions:
It is recommended that this reagent should be titrated in each testing system to obtain optimal results.

Product Information

MP00204-2 targets NDUFB8 in immunoassays as a matched antibody pair. Validated in Sandwich ELISA.

Capture antibody: NDUFB8 Recombinant antibody, PBS Only (Capture) 83216-6-PBS (230510G8). 100 μ g. Concentration 1 mg/mL.

Detection antibody: NDUFB8 Recombinant antibody, PBS Only (Capture/Detector) 83216-1-PBS (230510E10). 100 μ g. Concentration 1 mg/mL.

Unconjugated rabbit recombinant monoclonal antibody pair in PBS only storage buffer at a concentration of 1 mg/mL, ready for conjugation. Created using Proteintech's proprietary in-house recombinant technology. Recombinant production enables unrivalled batch-to-batch consistency, easy scale-up, and future security of supply.

Matched antibody pairs are designed for use in a variety of assays and platforms that require matched antibody pairs.

Antibody use should be optimized for each application and assay.

Storage

Storage:
Store at -80°C.
The product is shipped with ice packs. Upon receipt, store it immediately at -80°C
Storage buffer:
PBS only

For technical support and original validation data for this product please contact:

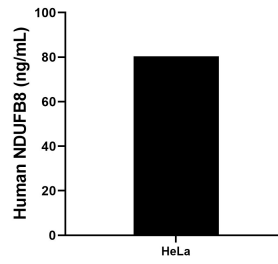
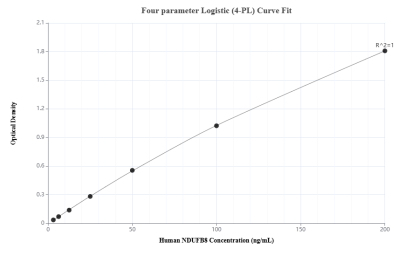
T: 4006900926

E: Proteintech-CN@ptglab.com

W: ptgcn.com

This product is exclusively available under Proteintech Group brand and is not available to purchase from any other manufacturer.

Selected Validation Data



Sandwich ELISA standard curve of MP00204-2, Human NDUFB8 Recombinant Matched Antibody Pair - PBS only. 83216-6-PBS was coated to a plate as the capture antibody and incubated with serial dilutions of standard Ag6495. 83216-1-PBS was HRP conjugated as the detection antibody. Range: 3.13-200 ng/mL.

The mean NDUFB8 concentration was determined to be 80.40 ng/mL in HeLa cell extract based on a 1.5 mg/mL extract load.