

For Research Use Only

SLC16A11 Recombinant Matched Antibody Pair, PBS Only



Catalog Number:MP00223-3

Capture Antibody Information

Catalog Number:
83239-4-PBS
Host:
Rabbit
Isotype:
IgG
Purification Method:
Protein A purification

Clone ID:
240081H8
Reactivity:
Human
GenBank:
BC093860
Immunogen Catalog Number:
Ag24920

Conjugate:
Unconjugated
Full name:
solute carrier family 16, member 11 (monocarboxylic acid transporter 11)
Gene ID:
162515

Detection Antibody Information

Catalog Number:
83239-2-PBS
Host:
Rabbit
Isotype:
IgG
Purification Method:
Protein A purification

Clone ID:
240081G10
Reactivity:
Human
GenBank:
BC093860
Immunogen Catalog Number:
Ag24920

Conjugate:
Unconjugated
Full name:
solute carrier family 16, member 11 (monocarboxylic acid transporter 11)
Gene ID:
162515

Applications

Tested Applications:
Cytometric bead array

Range:
1.25-20 ng/mL (Cytometric Bead Array)

Recommended Dilutions:
It is recommended that this reagent should be titrated in each testing system to obtain optimal results.

Product Information

MP00223-3 targets SLC16A11 in immunoassays as a matched antibody pair. Validated in Cytometric bead array.

Capture antibody: SLC16A11 Recombinant antibody, PBS Only (Capture) 83239-4-PBS (240081H8). 100 µg. Concentration 1 mg/mL.

Detection antibody: SLC16A11 Recombinant antibody, PBS Only (Detector) 83239-2-PBS (240081G10). 100 µg. Concentration 1 mg/mL.

Alternative SLC16A11 matched antibody pairs: MP00223-1, MP00223-2

Unconjugated rabbit recombinant monoclonal antibody pair in PBS only (BSA and azide free) storage buffer at a concentration of 1 mg/mL, ready for conjugation. Created using Proteintech's proprietary in-house recombinant technology. Recombinant production enables unrivalled batch-to-batch consistency, easy scale-up, and future security of supply.

Matched antibody pairs are designed for use in a variety of assays and platforms that require matched antibody pairs.

Antibody use should be optimized for each application and assay.

Storage

Storage:
Store at -80°C.
Storage buffer:
PBS only

For technical support and original validation data for this product please contact:

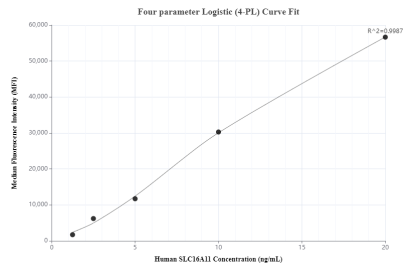
T: 4006900926

E: Proteintech-CN@ptglab.com

W: ptgcn.com

This product is exclusively available under Proteintech Group brand and is not available to purchase from any other manufacturer.

Selected Validation Data



Cytometric bead array standard curve of MP00223-3, SLC16A11 Recombinant Matched Antibody Pair, PBS Only. Capture antibody: 83239-4-PBS. Detection antibody: 83239-2-PBS. Standard: Ag24920. Range: 1.25-20 ng/mL.