

For Research Use Only

ROCK1 Recombinant Matched Antibody Pair, PBS Only



Catalog Number: MP00229-3

Capture Antibody Information

Catalog Number:
83166-4-PBS
Host:
Rabbit
Isotype:
IgG
Purification Method:
Protein A purification

Clone ID:
230423H5
Reactivity:
human
GenBank:
BC113114
Immunogen Catalog Number:
Ag16317

Conjugate:
Unconjugated
Full name:
Rho-associated, coiled-coil containing protein kinase 1
Gene ID:
6093

Detection Antibody Information

Catalog Number:
83166-1-PBS
Host:
Rabbit
Isotype:
IgG
Purification Method:
Protein A purification

Clone ID:
230423E4
Reactivity:
human
GenBank:
BC113114
Immunogen Catalog Number:
Ag16317

Conjugate:
Unconjugated
Full name:
Rho-associated, coiled-coil containing protein kinase 1
Gene ID:
6093

Applications

Tested Applications:
Sandwich ELISA

Range:
15.6-1000 pg/mL (Sandwich ELISA)

Recommended Dilutions:
It is recommended that this reagent should be titrated in each testing system to obtain optimal results.

Product Information

MP00229-3 targets ROCK1 in immunoassays as a matched antibody pair. Validated in Sandwich ELISA.

Capture antibody: ROCK1 Recombinant antibody, PBS Only (Capture) 83166-4-PBS (230423H5). 100 μ g. Concentration 1 mg/mL.

Detection antibody: ROCK1 Recombinant antibody, PBS Only (Capture/Detector) 83166-1-PBS (230423E4). 100 μ g. Concentration 1 mg/mL.

Alternative ROCK1 matched antibody pairs: MP00229-1, MP00229-2

Unconjugated rabbit recombinant monoclonal antibody pair in PBS only storage buffer at a concentration of 1 mg/mL, ready for conjugation. Created using Proteintech's proprietary in-house recombinant technology. Recombinant production enables unrivalled batch-to-batch consistency, easy scale-up, and future security of supply.

Matched antibody pairs are designed for use in a variety of assays and platforms that require matched antibody pairs.

Antibody use should be optimized for each application and assay.

Storage

Storage:
Store at -80°C.
The product is shipped with ice packs. Upon receipt, store it immediately at -80°C
Storage buffer:
PBS only

For technical support and original validation data for this product please contact:

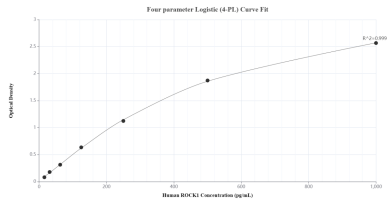
T: 4006900926

E: Proteintech-CN@ptglab.com

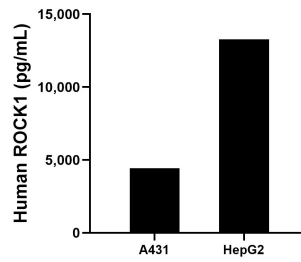
W: ptgcn.com

This product is exclusively available under Proteintech Group brand and is not available to purchase from any other manufacturer.

Selected Validation Data



Sandwich ELISA standard curve of MP00229-3, Human ROCK1 Recombinant Matched Antibody Pair - PBS only. 83166-4-PBS was coated to a plate as the capture antibody and incubated with serial dilutions of standard Ag16317. 83166-1-PBS was HRP conjugated as the detection antibody. Range: 15.6-1000 pg/mL



The mean ROCK1 concentration was determined to be 4,443.0 pg/mL in A431 cell extract based on a 2.6 mg/mL extract load and 13,265.0 pg/mL in HepG2 cell extract based on a 5.0 mg/mL extract load.