

For Research Use Only

Ribophorin I Recombinant Matched Antibody Pair, PBS Only



Catalog Number:MP00231-3

Capture Antibody Information

Catalog Number:

83250-1-PBS

Host:

Rabbit

Isotype:

IgG

Purification Method:

Protein A purification

Clone ID:

240044B1

Reactivity:

human

GenBank:

BC010839

Immunogen Catalog Number:

Ag3576

Conjugate:

Unconjugated

Full name:

ribophorin I

Gene ID:

6184

Detection Antibody Information

Catalog Number:

83250-2-PBS

Host:

Rabbit

Isotype:

IgG

Purification Method:

Protein A purification

Clone ID:

240044D4

Reactivity:

human, mouse, rat

GenBank:

BC010839

Immunogen Catalog Number:

Ag3576

Conjugate:

Unconjugated

Full name:

ribophorin I

Gene ID:

6184

Applications

Tested Applications:

Sandwich ELISA

Range:

78.1-5000 pg/mL (Sandwich ELISA)

Recommended Dilutions:

It is recommended that this reagent should be titrated in each testing system to obtain optimal results.

Product Information

MP00231-3 targets Ribophorin I in immunoassays as a matched antibody pair. Validated in Sandwich ELISA.

Capture antibody: Ribophorin I Recombinant antibody, PBS Only (Capture/Detector) 83250-1-PBS (240044B1). 100 μ g. Concentration 1 mg/ml.

Detection antibody: Ribophorin I Recombinant antibody, PBS Only (Capture/Detector) 83250-2-PBS (240044D4). 100 μ g. Concentration 1 mg/ml.

Alternative Ribophorin I matched antibody pairs: MP00231-1, MP00231-2

Unconjugated rabbit recombinant monoclonal antibody pair in PBS only storage buffer at a concentration of 1 mg/mL, ready for conjugation. Created using Proteintech's proprietary in-house recombinant technology. Recombinant production enables unrivalled batch-to-batch consistency, easy scale-up, and future security of supply.

Matched antibody pairs are designed for use in a variety of assays and platforms that require matched antibody pairs.

Antibody use should be optimized for each application and assay.

Storage

Storage:

Store at -80°C.

The product is shipped with ice packs. Upon receipt, store it immediately at -80°C

Storage buffer:

PBS only

For technical support and original validation data for this product please contact:

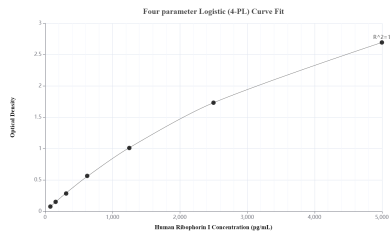
T: 4006900926

E: Proteintech-CN@ptglab.com

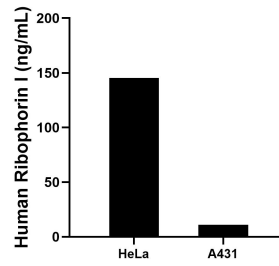
W: ptgcn.com

This product is exclusively available under Proteintech Group brand and is not available to purchase from any other manufacturer.

Selected Validation Data



Sandwich ELISA standard curve of MP00231-3, Human Ribophorin I Recombinant Matched Antibody Pair - PBS only. 83250-1-PBS was coated to a plate as the capture antibody and incubated with serial dilutions of standard Ag3576. 83250-2-PBS was HRP conjugated as the detection antibody. Range: 78.1-5000 pg/mL



The mean Ribophorin I concentration was determined to be 145.4 ng/mL in HeLa cell extract based on a 1.2 mg/mL extract load and 11.0 ng/mL in A431 cell extract based on a 1.5 mg/mL extract load.