

# FGFR4 Recombinant Matched Antibody Pair, PBS Only

Catalog Number: MP00257-4

## Capture Antibody Information

**Catalog Number:**

83153-6-PBS

**Host:**

Rabbit

**Isotype:**

IgG

**Purification Method:**

Protein A purification

**Clone ID:**

242713E1

**Reactivity:**

human

**GenBank:**

BC011847

**Conjugate:**

Unconjugated

**Full name:**

fibroblast growth factor receptor 4

**Gene ID:**

2264

## Detection Antibody Information

**Catalog Number:**

83153-5-PBS

**Host:**

Rabbit

**Isotype:**

IgG

**Purification Method:**

Protein A purification

**Clone ID:**

242713G6

**Reactivity:**

human

**GenBank:**

BC011847

**Conjugate:**

Unconjugated

**Full name:**

fibroblast growth factor receptor 4

**Gene ID:**

2264

## Applications

**Tested Applications:**

Sandwich ELISA

**Range:**

3.13-200 ng/mL (Sandwich ELISA)

**Recommended Dilutions:**

It is recommended that this reagent should be titrated in each testing system to obtain optimal results.

## Product Information

MP00257-4 targets FGFR4 in immunoassays as a matched antibody pair. Validated in Sandwich ELISA.

Capture antibody: FGFR4 Recombinant antibody, PBS Only (Capture) 83153-6-PBS (242713E1). 100 µg. Concentration 1 mg/mL.

Detection antibody: FGFR4 Recombinant antibody, PBS Only (Detector) 83153-5-PBS (242713G6). 100 µg. Concentration 1 mg/mL.

Unconjugated rabbit recombinant monoclonal antibody pair in PBS only storage buffer at a concentration of 1 mg/mL, ready for conjugation. Created using Proteintech's proprietary in-house recombinant technology. Recombinant production enables unrivalled batch-to-batch consistency, easy scale-up, and future security of supply.

Matched antibody pairs are designed for use in a variety of assays and platforms that require matched antibody pairs.

Antibody use should be optimized for each application and assay.

## Storage

**Storage:**

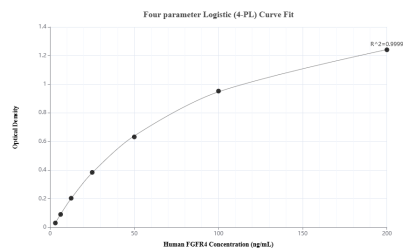
Store at -80°C.

**The product is shipped with ice packs. Upon receipt, store it immediately at -80°C**

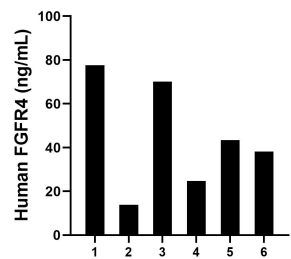
**Storage buffer:**

PBS only

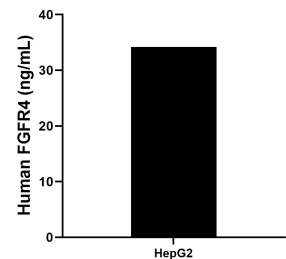
## Selected Validation Data



Sandwich ELISA standard curve of MP00257-4, Human FGFR4 Recombinant Matched Antibody Pair - PBS only. 83153-6-PBS was coated to a plate as the capture antibody and incubated with serial dilutions of standard Eg3510. 83153-5-PBS was HRP conjugated as the detection antibody. Range: 3.13-200 ng/mL



Serum of six individual healthy human donors was measured. The human FGFR4 concentration of detected samples was determined to be 44.65 ng/mL with a range of 13.85 - 77.61 ng/mL



HepG2 cells were cultured in DMEM supplemented with 10% fetal bovine serum, 100 U/mL penicillin, and 100  $\mu$ g/mL streptomycin sulfate. Aliquots of the cell culture supernatants were removed, assayed for levels of FGFR4 and measured 44.65 ng/mL