

For Research Use Only

SMAD4 Recombinant Matched Antibody Pair, PBS Only



Catalog Number:MP00267-4

Capture Antibody Information

Catalog Number:
83169-5-PBS

Host:
Rabbit

Isotype:
IgG

Purification Method:
Protein A purification

Clone ID:
240026G9

Reactivity:
human, mouse

GenBank:
BC002379

Immunogen Catalog Number:
Ag0299

Conjugate:
Unconjugated

Full name:
SMAD family member 4

Gene ID:
4089

Detection Antibody Information

Catalog Number:
83169-6-PBS

Host:
Rabbit

Isotype:
IgG

Purification Method:
Protein A purification

Clone ID:
240026A4

Reactivity:
human

GenBank:
BC002379

Immunogen Catalog Number:
Ag0299

Conjugate:
Unconjugated

Full name:
SMAD family member 4

Gene ID:
4089

Applications

Tested Applications:
Sandwich ELISA

Range:
39.1-2500 pg/mL (Sandwich ELISA)

Recommended Dilutions:
It is recommended that this reagent should be titrated in each testing system to obtain optimal results.

Product Information

MP00267-4 targets SMAD4 in immunoassays as a matched antibody pair. Validated in Sandwich ELISA.

Capture antibody: SMAD4 Recombinant antibody, PBS Only (Capture) 83169-5-PBS (240026G9). 100 µg. Concentration 1 mg/ml.

Detection antibody: SMAD4 Recombinant antibody, PBS Only (Detector) 83169-6-PBS (240026A4). 100 µg. Concentration 1 mg/ml.

Alternative SMAD4 matched antibody pairs: MP00267-1, MP00267-2, MP00267-3, MP50149-1

Unconjugated rabbit recombinant monoclonal antibody pair in PBS only storage buffer at a concentration of 1 mg/mL, ready for conjugation. Created using Proteintech's proprietary in-house recombinant technology. Recombinant production enables unrivalled batch-to-batch consistency, easy scale-up, and future security of supply.

Matched antibody pairs are designed for use in a variety of assays and platforms that require matched antibody pairs.

Antibody use should be optimized for each application and assay.

Storage

Storage:

Store at -80°C.

The product is shipped with ice packs. Upon receipt, store it immediately at -80°C

Storage buffer:

PBS only

For technical support and original validation data for this product please contact:

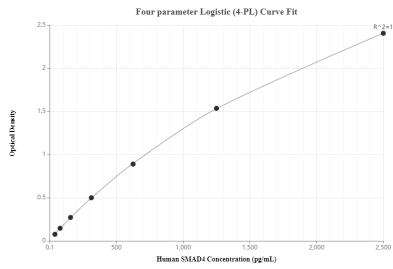
T: 4006900926

E: Proteintech-CN@ptglab.com

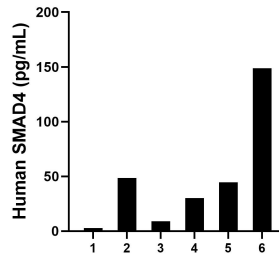
W: ptgcn.com

This product is exclusively available under Proteintech Group brand and is not available to purchase from any other manufacturer.

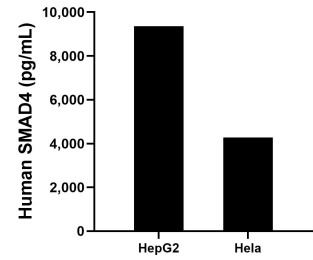
Selected Validation Data



Sandwich ELISA standard curve of MP00267-4, Human SMAD4 Monoclonal Matched Antibody Pair - PBS only. 83169-5-PBS was coated to a plate as the capture antibody and incubated with serial dilutions of standard Ag0299. 83169-6-PBS was HRP conjugated as the detection antibody. Range: 39.1-2500 pg/mL



Serum of sixteen individual healthy human donors were measured. The human SMAD4 concentration of detected samples was determined to be 47.3 pg/mL with a range of ND - 148.8 pg/mL.



The mean human SMAD4 concentration was determined to be 9,362.0 pg/mL in HepG2 cell extract based on a 6.0 mg/mL extract load and 4,272.2 pg/mL in HL-60 cell extract based on a 3 mg/mL extract load.