

For Research Use Only



IGFBP4 Recombinant Matched Antibody Pair, PBS Only

Catalog Number:MP00279-2

Capture Antibody Information

Catalog Number:
83200-4-PBS
Host:
Rabbit
Isotype:
IgG
Purification Method:
Protein A purification

Clone ID:
230543H7
Reactivity:
human
GenBank:
NM_001552.3

Conjugate:
Unconjugated
Full name:
insulin-like growth factor binding protein 4
Gene ID:
3487

Detection Antibody Information

Catalog Number:
83200-1-PBS
Host:
Rabbit
Isotype:
IgG
Purification Method:
Protein A purification

Clone ID:
230543B11
Reactivity:
human
GenBank:
NM_001552.3

Conjugate:
Unconjugated
Full name:
insulin-like growth factor binding protein 4
Gene ID:
3487

Applications

Tested Applications:
Sandwich ELISA

Range:
0.313-20 ng/mL (Sandwich ELISA)

Recommended Dilutions:
It is recommended that this reagent should be titrated in each testing system to obtain optimal results.

Product Information

MP00279-2 targets IGFBP4 in immunoassays as a matched antibody pair. Validated in Sandwich ELISA.

Capture antibody: IGFBP4 Recombinant antibody, PBS Only (Capture) 83200-4-PBS (230543H7). 100 µg. Concentration 1 mg/ml.

Detection antibody: IGFBP4 Recombinant antibody, PBS Only (Detector) 83200-1-PBS (230543B11). 100 µg. Concentration 1 mg/ml.

Alternative IGFBP4 matched antibody pairs: MP00279-1, MP50212-1, MP50212-2

Unconjugated rabbit recombinant monoclonal antibody pair in PBS only storage buffer at a concentration of 1 mg/mL, ready for conjugation. Created using Proteintech's proprietary in-house recombinant technology. Recombinant production enables unrivalled batch-to-batch consistency, easy scale-up, and future security of supply.

Matched antibody pairs are designed for use in a variety of assays and platforms that require matched antibody pairs.

Antibody use should be optimized for each application and assay.

Storage

Storage:
Store at -80°C.
The product is shipped with ice packs. Upon receipt, store it immediately at -80°C
Storage buffer:
PBS only

For technical support and original validation data for this product please contact:

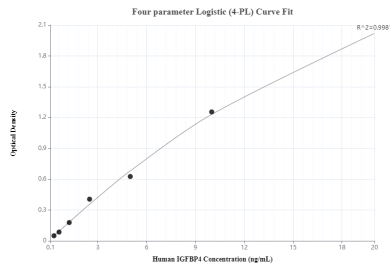
T: 4006900926

E: Proteintech-CN@ptglab.com

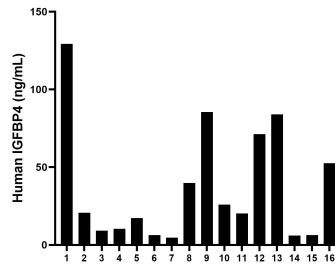
W: ptgcn.com

This product is exclusively available under Proteintech Group brand and is not available to purchase from any other manufacturer.

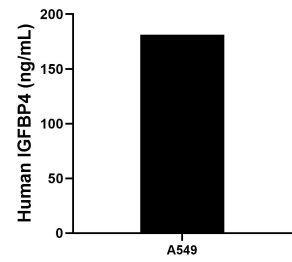
Selected Validation Data



Sandwich ELISA standard curve of MP00279-2, Human IGFBP4 Recombinant Matched Antibody Pair - PBS only. 83200-4-PBS was coated to a plate as the capture antibody and incubated with serial dilutions of standard Eg0825. 83200-1-PBS was HRP conjugated as the detection antibody. Range: 0.313-20 ng/mL



Serum of sixteen individual healthy human donors was measured. The IGFBP4 concentration of detected samples was determined to be 36.9 ng/mL with a range of 4.7 - 129.3 ng/mL



A549 were cultured in DMEM supplemented with 10% fetal bovine serum, 2.5 mM L-glutamine, 100 U/mL penicillin, and 100 μ g/mL streptomycin sulfate. The mean IGFBP4 concentration was determined to be 181.3 ng/mL in A549 cell supernatant.