

For Research Use Only

SLC6A12 Recombinant Matched Antibody Pair, PBS Only



Catalog Number:MP00289-1

Capture Antibody Information

Catalog Number:
83195-4-PBS
Host:
Rabbit
Isotype:
IgG
Purification Method:
Protein A purification

Clone ID:
240021D9
Reactivity:
Human
GenBank:
BC126215
Immunogen Catalog Number:
Ag18778

Conjugate:
Unconjugated
Full name:
solute carrier family 6
(neurotransmitter transporter,
betaine/GABA), member 12
Gene ID:
6539

Detection Antibody Information

Catalog Number:
83195-3-PBS
Host:
Rabbit
Isotype:
IgG
Purification Method:
Protein A purification

Clone ID:
240021B3
Reactivity:
Human
GenBank:
BC126215
Immunogen Catalog Number:
Ag18778

Conjugate:
Unconjugated
Full name:
solute carrier family 6
(neurotransmitter transporter,
betaine/GABA), member 12
Gene ID:
6539

Applications

Tested Applications:
Cytometric bead array

Range:
0.625-20 ng/mL (Cytometric Bead Array)

Recommended Dilutions:
It is recommended that this reagent should be titrated in each testing system to obtain optimal results.

Product Information

MP00289-1 targets SLC6A12 in immunoassays as a matched antibody pair. Validated in Cytometric bead array.

Capture antibody: SLC6A12 Recombinant antibody, PBS Only (Capture) 83195-4-PBS (240021D9). 100 µg. Concentration 1 mg/mL.

Detection antibody: SLC6A12 Recombinant antibody, PBS Only (Detector) 83195-3-PBS (240021B3). 100 µg. Concentration 1 mg/mL.

Alternative SLC6A12 matched antibody pairs: MP00289-2, MP00289-3

Unconjugated rabbit recombinant monoclonal antibody pair in PBS only (BSA and azide free) storage buffer at a concentration of 1 mg/mL, ready for conjugation. Created using Proteintech's proprietary in-house recombinant technology. Recombinant production enables unrivalled batch-to-batch consistency, easy scale-up, and future security of supply.

Matched antibody pairs are designed for use in a variety of assays and platforms that require matched antibody pairs.

Antibody use should be optimized for each application and assay.

Storage

Storage:
Store at -80°C.
Storage buffer:
PBS only

For technical support and original validation data for this product please contact:

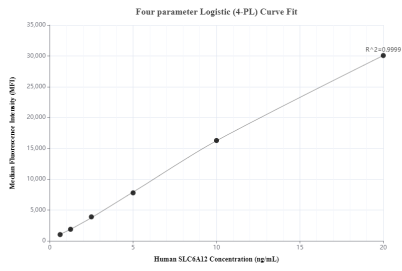
T: 4006900926

E: Proteintech-CN@ptglab.com

W: ptgcn.com

This product is exclusively available under Proteintech Group brand and is not available to purchase from any other manufacturer.

Selected Validation Data



Cytometric bead array standard curve of MP00289-1, SLC6A12 Recombinant Matched Antibody Pair, PBS Only. Capture antibody: 83195-4-PBS. Detection antibody: 83195-3-PBS. Standard: Ag18778. Range: 0.625-20 ng/mL.