

HIRA Recombinant Matched Antibody Pair, PBS Only

Catalog Number:MP00291-1

Capture Antibody Information

Catalog Number:
83194-3-PBS
Host:
Rabbit
Isotype:
IgG
Purification Method:
Protein A purification

Clone ID:
240006C5
Reactivity:
human
GenBank:
NM_003325
Immunogen Catalog Number:
Ag34439

Conjugate:
Unconjugated
Full name:
HIR histone cell cycle regulation defective homolog A (*S. cerevisiae*)
Gene ID:
7290

Detection Antibody Information

Catalog Number:
83194-1-PBS
Host:
Rabbit
Isotype:
IgG
Purification Method:
Protein A purification

Clone ID:
240006A7
Reactivity:
human
GenBank:
NM_003325
Immunogen Catalog Number:
Ag34439

Conjugate:
Unconjugated
Full name:
HIR histone cell cycle regulation defective homolog A (*S. cerevisiae*)
Gene ID:
7290

Applications

Tested Applications:
Cytometric bead array, Sandwich ELISA

Range:
0.625-20 ng/mL (Cytometric Bead Array)
0.313-20 ng/mL (Sandwich ELISA)

Recommended Dilutions:
It is recommended that this reagent should be titrated in each testing system to obtain optimal results.

Product Information

MP00291-1 targets HIRA in immunoassays as a matched antibody pair. Validated in Cytometric bead array, Sandwich ELISA.

Capture antibody: HIRA Recombinant antibody, PBS Only (Capture) 83194-3-PBS (240006C5). 100 µg. Concentration 1 mg/mL.

Detection antibody: HIRA Recombinant antibody, PBS Only (Detector) 83194-1-PBS (240006A7). 100 µg. Concentration 1 mg/mL.

Alternative HIRA matched antibody pairs: MP00291-2

Unconjugated rabbit recombinant monoclonal antibody pair in PBS only storage buffer at a concentration of 1 mg/mL, ready for conjugation. Created using Proteintech's proprietary in-house recombinant technology. Recombinant production enables unrivalled batch-to-batch consistency, easy scale-up, and future security of supply.

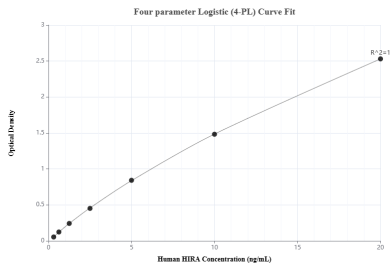
Matched antibody pairs are designed for use in a variety of assays and platforms that require matched antibody pairs.

Antibody use should be optimized for each application and assay.

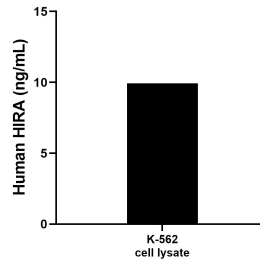
Storage

Storage:
Store at -80°C.
The product is shipped with ice packs. Upon receipt, store it immediately at -80°C
Storage buffer:
PBS only

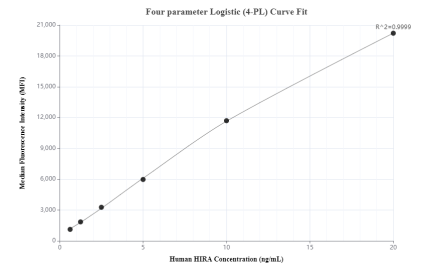
Selected Validation Data



Sandwich ELISA standard curve of MP00291-1, Human HIRA Recombinant Matched Antibody Pair - PBS only. 83194-3-PBS was coated to a plate as the capture antibody and incubated with serial dilutions of standard Ag34439. 83194-1-PBS was HRP conjugated as the detection antibody. Range: 0.313-20 ng/mL



K-562 cell lysates were measured. The human HIAR concentration of detected samples was determined to be 9.93 ng/mL (based on a 4.5 mg/mL extract load) in K-562 cell lysate.



Cytometric bead array standard curve of MP00291-1, HIRA Recombinant Matched Antibody Pair, PBS Only. Capture antibody: 83194-3-PBS. Detection antibody: 83194-1-PBS. Standard: Ag34439. Range: 0.625-20 ng/mL