

For Research Use Only

# MPO Recombinant Matched Antibody Pair, PBS Only



Catalog Number:MP00321-2

## Capture Antibody Information

Catalog Number:  
83282-4-PBS

Host:  
Rabbit

Isotype:  
IgG

Purification Method:  
Protein A purification

Clone ID:  
240229G6

Reactivity:  
human

GenBank:  
BC130476

Conjugate:  
Unconjugated

Full name:  
myeloperoxidase

Gene ID:  
4353

## Detection Antibody Information

Catalog Number:  
83282-5-PBS

Host:  
Rabbit

Isotype:  
IgG

Purification Method:  
Protein A purification

Clone ID:  
240229A6

Reactivity:  
human

GenBank:  
BC130476

Conjugate:  
Unconjugated

Full name:  
myeloperoxidase

Gene ID:  
4353

## Applications

Tested Applications:  
Sandwich ELISA

Range:  
39-2500 pg/mL (Sandwich ELISA)

Recommended Dilutions:  
It is recommended that this reagent should be titrated in each testing system to obtain optimal results.

## Product Information

MP00321-2 targets MPO in immunoassays as a matched antibody pair. Validated in Sandwich ELISA.

Capture antibody: MPO Recombinant antibody, PBS Only (Capture) 83282-4-PBS (240229G6). 100  $\mu$ g. Concentration 1 mg/mL.

Detection antibody: MPO Recombinant antibody, PBS Only (Detector) 83282-5-PBS (240229A6). 100  $\mu$ g. Concentration 1 mg/mL.

Alternative MPO matched antibody pairs: MP00321-1, MP50164-1

Unconjugated rabbit recombinant monoclonal antibody pair in PBS only storage buffer at a concentration of 1 mg/mL, ready for conjugation. Created using Proteintech's proprietary in-house recombinant technology. Recombinant production enables unrivalled batch-to-batch consistency, easy scale-up, and future security of supply.

Matched antibody pairs are designed for use in a variety of assays and platforms that require matched antibody pairs.

Antibody use should be optimized for each application and assay.

## Storage

Storage:  
Store at -80°C.  
**The product is shipped with ice packs. Upon receipt, store it immediately at -80°C**  
Storage buffer:  
PBS only

For technical support and original validation data for this product please contact:

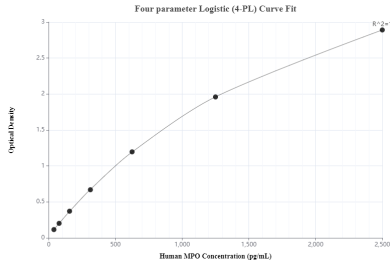
T: 4006900926

E: [Proteintech-CN@ptglab.com](mailto:Proteintech-CN@ptglab.com)

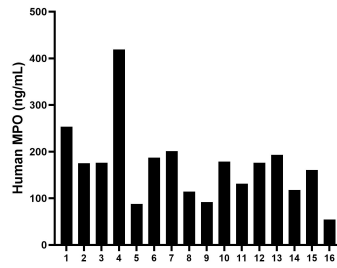
W: [ptgcn.com](http://ptgcn.com)

**This product is exclusively available under Proteintech Group brand and is not available to purchase from any other manufacturer.**

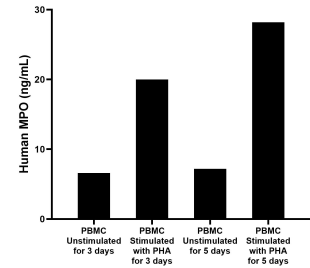
## Selected Validation Data



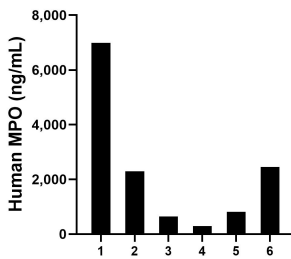
Sandwich ELISA standard curve of MP00321-2, Human MPO Recombinant Matched Antibody Pair - PBS only. 83282-4-PBS was coated to a plate as the capture antibody and incubated with serial dilutions of standard Eg0511. 83282-5-PBS was HRP conjugated as the detection antibody. Range: 39-2500 pg/mL



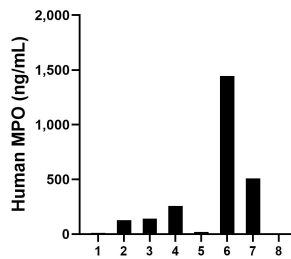
Serum of sixteen individual healthy human donors was measured. The MPO concentration of detected samples was determined to be 169.9 ng/mL with a range of 54.5 - 419.2 ng/mL.



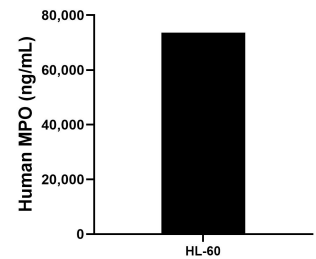
Human peripheral blood mononuclear cells (PBMC) were cultured unstimulated or stimulated with 10  $\mu$ g/mL PHA for 3 days or 5 days. For the PBMC supernatant cultured for 3 days, the mean MPO concentration was determined to be 6.6 ng/mL in unstimulated PBMC supernatant, 20.0 ng/mL in PHA stimulated PBMC supernatant. For the PBMC supernatant cultured for 5 days, the mean MPO concentration was determined to be 7.2 ng/mL in unstimulated PBMC supernatant,



Urine of six individual healthy human donors was measured. The MPO concentration of detected samples was determined to be 2,249.9 pg/mL with a range of 294.1 - 6,991.1 pg/mL



Saliva of eight individual healthy human donors was measured. The MPO concentration of detected samples was determined to be 314.7 ng/mL with a range of 6.3 - 1,446.1 ng/mL



The mean MPO concentration was determined to be 73,583.3 ng/mL in HL-60 cell extract based on a 4.3 mg/mL extract load.