

For Research Use Only



IGFBP2 Recombinant Matched Antibody Pair, PBS Only

Catalog Number:MP00322-2

Capture Antibody Information

Catalog Number:
83283-3-PBS

Host:
Rabbit

Isotype:
IgG

Purification Method:
Protein A purification

Clone ID:
240227D4

Reactivity:
human

GenBank:
NM_000597.3

Conjugate:
Unconjugated

Full name:
IGF binding protein 2

Gene ID:
3485

Detection Antibody Information

Catalog Number:
83283-2-PBS

Host:
Rabbit

Isotype:
IgG

Purification Method:
Protein A purification

Clone ID:
240227G3

Reactivity:
human

GenBank:
NM_000597.3

Conjugate:
Unconjugated

Full name:
IGF binding protein 2

Gene ID:
3485

Applications

Tested Applications:
Sandwich ELISA

Range:
78.1-5000 pg/mL (Sandwich ELISA)

Recommended Dilutions:
It is recommended that this reagent should be titrated in each testing system to obtain optimal results.

Product Information

MP00322-2 targets IGFBP2 in immunoassays as a matched antibody pair. Validated in Sandwich ELISA.

Capture antibody: IGFBP2 Recombinant antibody, PBS Only (Capture) 83283-3-PBS (240227D4). 100 µg. Concentration 1 mg/ml.

Detection antibody: IGFBP2 Recombinant antibody, PBS Only (Capture/Detector) 83283-2-PBS (240227G3). 100 µg. Concentration 1 mg/ml.

Alternative IGFBP2 matched antibody pairs: MP00322-1

Unconjugated rabbit recombinant monoclonal antibody pair in PBS only storage buffer at a concentration of 1 mg/mL, ready for conjugation. Created using Proteintech's proprietary in-house recombinant technology. Recombinant production enables unrivalled batch-to-batch consistency, easy scale-up, and future security of supply.

Matched antibody pairs are designed for use in a variety of assays and platforms that require matched antibody pairs.

Antibody use should be optimized for each application and assay.

Storage

Storage:
Store at -80°C.
The product is shipped with ice packs. Upon receipt, store it immediately at -80°C
Storage buffer:
PBS only

For technical support and original validation data for this product please contact:

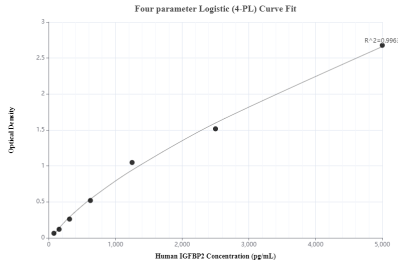
T: 4006900926

E: Proteintech-CN@ptglab.com

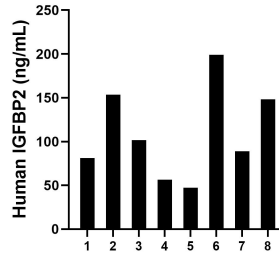
W: ptgcn.com

This product is exclusively available under Proteintech Group brand and is not available to purchase from any other manufacturer.

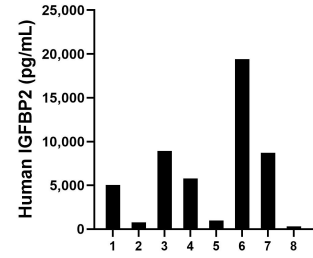
Selected Validation Data



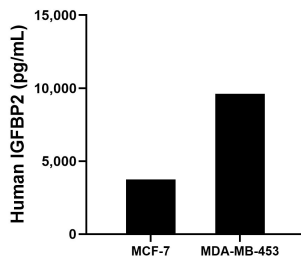
Sandwich ELISA standard curve of MP00322-2, human IGFBP2 Recombinant Matched Antibody Pair - PBS only. 83283-3-PBS was coated to a plate as the capture antibody and incubated with serial dilutions of standard Eg0823. 83283-2-PBS was HRP conjugated as the detection antibody. Range: 78.1-5000 pg/mL



Serum of eight individual healthy human donors was measured. The IGFBP2 concentration of detected samples was determined to be 109.5 ng/mL with a range of 47.4 - 199.1 ng/mL



Urine of eight individual healthy human donors was measured. The IGFBP2 concentration of detected samples was determined to be 6251.0 pg/mL with a range of 306.2 - 19423.8 pg/mL



MCF-7 human breast cancer cells (5×10^6 cells/mL) were cultured in DMEM and 10% fetal bovine serum, 4 mM L-glutamine, 4500 mg/L glucose, 100 U/mL penicillin, and 100 μ g/mL streptomycin sulfate. An aliquot of the cell culture supernatants was removed, assayed for human IGFBP2, and measured 3750.9 pg/mL. MDA-MB-453 human breast carcinoma cells (5×10^6 cells/mL) were cultured in DMEM supplemented with 10% fetal bovine serum, 2.5 mM L-glutamine, 100

