

For Research Use Only

PTEN Recombinant Matched Antibody Pair, PBS Only



Catalog Number:MP00328-6

Capture Antibody Information

Catalog Number:
80718-8-PBS

Host:
Rabbit

Isotype:
IgG

Purification Method:
Protein A purification

Clone ID:
240134D12

Reactivity:
human

GenBank:
BC005821

Immunogen Catalog Number:
Ag17274

Conjugate:
Unconjugated

Full name:
phosphatase and tensin homolog

Gene ID:
5728

Detection Antibody Information

Catalog Number:
80718-4-PBS

Host:
Rabbit

Isotype:
IgG

Purification Method:
Protein A purification

Clone ID:
240134C10

Reactivity:
human

GenBank:
BC005821

Immunogen Catalog Number:
Ag17274

Conjugate:
Unconjugated

Full name:
phosphatase and tensin homolog

Gene ID:
5728

Applications

Tested Applications:
Sandwich ELISA

Range:
0.625-40 ng/mL (Sandwich ELISA)

Recommended Dilutions:
It is recommended that this reagent should be titrated in each testing system to obtain optimal results.

Product Information

MP00328-6 targets PTEN in immunoassays as a matched antibody pair. Validated in Sandwich ELISA.

Capture antibody: PTEN Recombinant antibody, PBS Only (Capture) 80718-8-PBS (240134D12). 100 µg. Concentration 1 mg/ml.

Detection antibody: PTEN Recombinant antibody, PBS Only (Detector) 80718-4-PBS (240134C10). 100 µg. Concentration 1 mg/ml.

Alternative PTEN matched antibody pairs: MP00328-1, MP00328-2, MP00328-3, MP00328-4, MP00328-5, MP50170-1

Unconjugated rabbit recombinant monoclonal antibody pair in PBS only storage buffer at a concentration of 1 mg/mL, ready for conjugation. Created using Proteintech's proprietary in-house recombinant technology. Recombinant production enables unrivalled batch-to-batch consistency, easy scale-up, and future security of supply.

Matched antibody pairs are designed for use in a variety of assays and platforms that require matched antibody pairs.

Antibody use should be optimized for each application and assay.

Storage

Storage:

Store at -80°C.

The product is shipped with ice packs. Upon receipt, store it immediately at -80°C

Storage buffer:

PBS only

For technical support and original validation data for this product please contact:

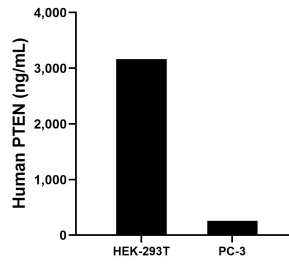
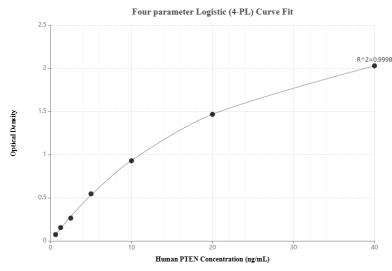
T: 4006900926

E: Proteintech-CN@ptglab.com

W: ptgcn.com

This product is exclusively available under Proteintech Group brand and is not available to purchase from any other manufacturer.

Selected Validation Data



Sandwich ELISA standard curve of MP00328-6, Human PTEN Recombinant Matched Antibody Pair - PBS only. 80718-8-PBS was coated to a plate as the capture antibody and incubated with serial dilutions of standard Ag17274. 80718-4-PBS was HRP conjugated as the detection antibody. Range: 0.625-40 ng/mL

The mean PTEN concentration was determined to be 3,166.00 ng/mL in HEK-293T cell extract based on a 3.2 mg/mL extract load and 258.50 ng/mL in PC-3 cell extract based on a 3.0 mg/mL extract load.