

For Research Use Only

BRAP Recombinant Matched Antibody Pair, PBS Only



Catalog Number:MP00338-4

Capture Antibody Information

Catalog Number: 83314-5-PBS	Clone ID: 240099G12	Conjugate: Unconjugated
Host: Rabbit	Reactivity: human	Full name: BRCA1 associated protein
Isotype: IgG	GenBank: BC136698	Gene ID: 8315
Purification Method: Protein A purification	Immunogen Catalog Number: Ag26728	

Detection Antibody Information

Catalog Number: 83314-2-PBS	Clone ID: 240099H3	Conjugate: Unconjugated
Host: Rabbit	Reactivity: human	Full name: BRCA1 associated protein
Isotype: IgG	GenBank: BC136698	Gene ID: 8315
Purification Method: Protein A purification	Immunogen Catalog Number: Ag26728	

Applications

Tested Applications: Sandwich ELISA	Range: 0.313-20 ng/mL (Sandwich ELISA)	Recommended Dilutions: It is recommended that this reagent should be titrated in each testing system to obtain optimal results.
---	--	---

Product Information

MP00338-4 targets BRAP in immunoassays as a matched antibody pair. Validated in Sandwich ELISA.

Capture antibody: BRAP Recombinant antibody, PBS Only (Capture/Detector) 83314-5-PBS (240099G12). 100 μ g. Concentration 1 mg/ml.

Detection antibody: BRAP Recombinant antibody, PBS Only (Capture/Detector) 83314-2-PBS (240099H3). 100 μ g. Concentration 1 mg/ml.

Alternative BRAP matched antibody pairs: MP00338-1, MP00338-2, MP00338-3

Unconjugated rabbit recombinant monoclonal antibody pair in PBS only storage buffer at a concentration of 1 mg/mL, ready for conjugation. Created using Proteintech's proprietary in-house recombinant technology. Recombinant production enables unrivalled batch-to-batch consistency, easy scale-up, and future security of supply.

Matched antibody pairs are designed for use in a variety of assays and platforms that require matched antibody pairs.

Antibody use should be optimized for each application and assay.

Storage

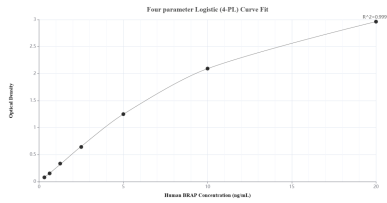
Storage:
Store at -80°C.
The product is shipped with ice packs. Upon receipt, store it immediately at -80°C

Storage buffer:
PBS only

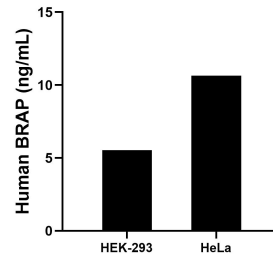
For technical support and original validation data for this product please contact:
T: 4006900926 E: Proteintech-CN@ptglab.com W: ptgcn.com

This product is exclusively available under Proteintech Group brand and is not available to purchase from any other manufacturer.

Selected Validation Data



Sandwich ELISA standard curve of MP00338-4, Human BRAP Recombinant Matched Antibody Pair - PBS only. 83314-5-PBS was coated to a plate as the capture antibody and incubated with serial dilutions of standard Ag26728. 83314-2-PBS was HRP conjugated as the detection antibody. Range: 0.313-20 ng/mL.



The mean BRAP concentration was determined to be 5.53 ng/mL in HEK-293 cell extract based on a 1.20 mg/mL extract load and 10.64 ng/mL in HeLa cell extract based on a 1.20 mg/mL extract load.