

GPC1 Recombinant Matched Antibody Pair, PBS Only

Catalog Number:MP00342-2

Capture Antibody Information

Catalog Number:
83318-3-PBS

Host:
Rabbit

Isotype:
IgG

Purification Method:
Protein A purification

Clone ID:
240207E12

Reactivity:
human

GenBank:
BC051279

Conjugate:
Unconjugated

Full name:
glypican 1

Gene ID:
2817

Detection Antibody Information

Catalog Number:
83318-2-PBS

Host:
Rabbit

Isotype:
IgG

Purification Method:
Protein A purification

Clone ID:
240207F5

Reactivity:
human

GenBank:
BC051279

Conjugate:
Unconjugated

Full name:
glypican 1

Gene ID:
2817

Applications

Tested Applications:
Cytometric bead array, Sandwich ELISA

Range:
1.25-40 ng/mL (Cytometric Bead Array)
0.156-10 ng/mL (Sandwich ELISA)

Recommended Dilutions:
It is recommended that this reagent should be titrated in each testing system to obtain optimal results.

Product Information

MP00342-2 targets GPC1 in immunoassays as a matched antibody pair. Validated in Cytometric bead array, Sandwich ELISA.

Capture antibody: GPC1 Recombinant antibody, PBS Only (Capture) 83318-3-PBS (240207E12). 100 µg. Concentration 1 mg/ml.

Detection antibody: GPC1 Recombinant antibody, PBS Only (Capture/Detector) 83318-2-PBS (240207F5). 100 µg. Concentration 1 mg/ml.

Alternative GPC1 matched antibody pairs: MP00342-1, MP00342-3, MP50239-1, MP50239-2, MP50239-3

Unconjugated rabbit recombinant monoclonal antibody pair in PBS only storage buffer at a concentration of 1 mg/mL, ready for conjugation. Created using Proteintech's proprietary in-house recombinant technology. Recombinant production enables unrivalled batch-to-batch consistency, easy scale-up, and future security of supply.

Matched antibody pairs are designed for use in a variety of assays and platforms that require matched antibody pairs.

Antibody use should be optimized for each application and assay.

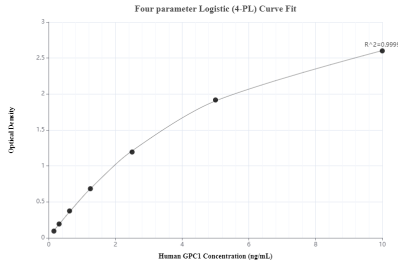
Storage

Storage:
Store at -80°C.

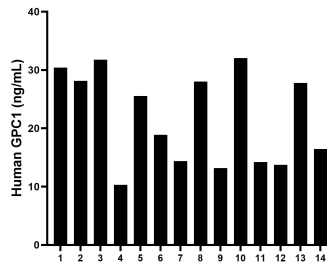
The product is shipped with ice packs. Upon receipt, store it immediately at -80°C

Storage buffer:
PBS only

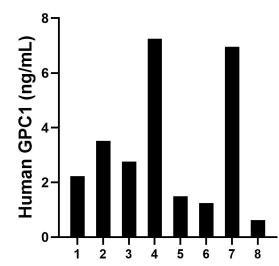
Selected Validation Data



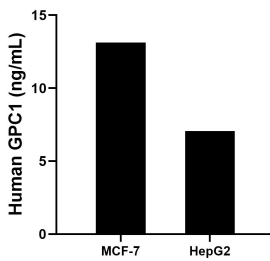
Sandwich ELISA standard curve of MP00342-2, human GPC1 Recombinant Matched Antibody Pair - PBS only. 83318-3-PBS was coated to a plate as the capture antibody and incubated with serial dilutions of standard Eg0737. 83318-2-PBS was HRP conjugated as the detection antibody. Range: 0.156-10 ng/mL



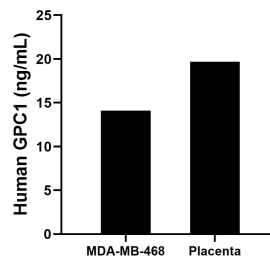
Serum of fourteen individual healthy human donors was measured. The GPC1 concentration of detected samples was determined to be 21.8 ng/mL with a range of 10.3 - 32.1 ng/mL



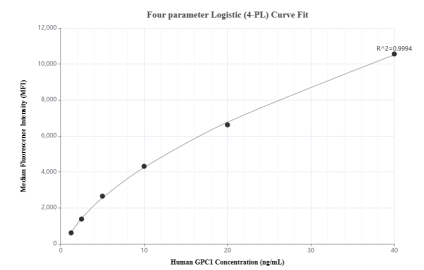
Urine of eight individual healthy human donors was measured. The GPC1 concentration of detected samples was determined to be 3.3 ng/mL with a range of 0.6 - 7.2 ng/mL



MCF-7 human breast cancer cells (5×10^6 cells/mL) were cultured in DMEM and 10% fetal bovine serum, 4 mM L-glutamine, 4500 mg/L glucose, 100 U/mL penicillin, and 100 μ g/mL streptomycin sulfate. An aliquot of the cell culture supernatants was removed, assayed for human GPC1, and measured 13.1 ng/mL. HepG2 human hepatocellular carcinoma cells (5×10^6 cells/mL) were cultured in DMEM supplemented with 10% fetal bovine serum, 100 U/mL penicillin, and



The mean GPC1 concentration was determined to be 10.0 ng/mL in MDA-MB-468 cell extract based on a 3.2 mg/mL extract load and 19.7 ng/mL in placenta tissue extract based on a 1.8 mg/mL extract load.



Cytometric bead array standard curve of MP00342-2, GPC1 Recombinant Matched Antibody Pair, PBS Only. Capture antibody: 83318-3-PBS. Detection antibody: 83318-2-PBS. Standard: Eg0737. Range: 1.25-40 ng/mL