

For Research Use Only

# Synaptophysin Recombinant Matched Antibody Pair, PBS Only



Catalog Number:MP00345-4

## Capture Antibody Information

Catalog Number:  
82900-8-PBS

Host:  
Rabbit

Isotype:  
IgG

Purification Method:  
Protein A purification

Clone ID:  
240162E8

Reactivity:  
human

GenBank:  
BC064550

Immunogen Catalog Number:  
Ag11781

Conjugate:  
Unconjugated

Full name:  
synaptophysin

Gene ID:  
6855

## Detection Antibody Information

Catalog Number:  
82900-4-PBS

Host:  
Rabbit

Isotype:  
IgG

Purification Method:  
Protein A purification

Clone ID:  
240162C3

Reactivity:  
human

GenBank:  
BC064550

Immunogen Catalog Number:  
Ag11781

Conjugate:  
Unconjugated

Full name:  
synaptophysin

Gene ID:  
6855

## Applications

Tested Applications:  
Sandwich ELISA

Range:  
0.313-20 ng/mL (Sandwich ELISA)

Recommended Dilutions:  
It is recommended that this reagent should be titrated in each testing system to obtain optimal results.

## Product Information

MP00345-4 targets Synaptophysin in immunoassays as a matched antibody pair. Validated in Sandwich ELISA.

Capture antibody: Synaptophysin Recombinant antibody, PBS Only (Capture) 82900-8-PBS (240162E8). 100  $\mu$ g. Concentration 1 mg/ml.

Detection antibody: Synaptophysin Recombinant antibody, PBS Only (Capture/Detector) 82900-4-PBS (240162C3). 100  $\mu$ g. Concentration 1 mg/ml.

Alternative Synaptophysin matched antibody pairs: MP00345-1, MP00345-2, MP00345-3, MP50359-1, MP50359-2

Unconjugated rabbit recombinant monoclonal antibody pair in PBS only storage buffer at a concentration of 1 mg/mL, ready for conjugation. Created using Proteintech's proprietary in-house recombinant technology. Recombinant production enables unrivalled batch-to-batch consistency, easy scale-up, and future security of supply.

Matched antibody pairs are designed for use in a variety of assays and platforms that require matched antibody pairs.

Antibody use should be optimized for each application and assay.

## Storage

Storage:

Store at -80°C.

**The product is shipped with ice packs. Upon receipt, store it immediately at -80°C**

Storage buffer:

PBS only

For technical support and original validation data for this product please contact:

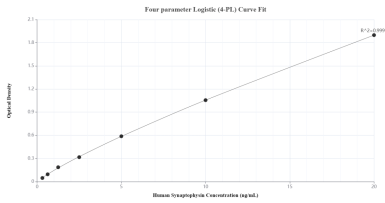
T: 4006900926

E: [Proteintech-CN@ptglab.com](mailto:Proteintech-CN@ptglab.com)

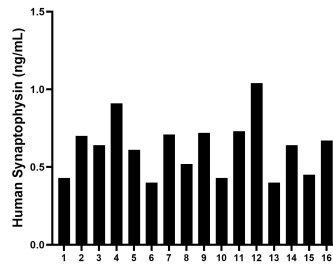
W: [ptgcn.com](http://ptgcn.com)

**This product is exclusively available under Proteintech Group brand and is not available to purchase from any other manufacturer.**

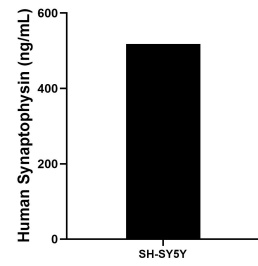
## Selected Validation Data



Sandwich ELISA standard curve of MP00345-4, Human Synaptophysin Recombinant Matched Antibody Pair - PBS only. 82900-8-PBS was coated to a plate as the capture antibody and incubated with serial dilutions of standard Ag11781. 82900-4-PBS was HRP conjugated as the detection antibody. Range: 0.313-20 ng/mL



Serum of sixteen individual healthy human donors was measured. The Synaptophysin concentration of detected samples was determined to be 0.63 ng/mL with a range of 0.40 - 1.04 ng/mL



The mean Synaptophysin concentration was determined to be 518.35 ng/mL in SH-SY5Y cell extract based on a 2.2 mg/mL extract load.