

For Research Use Only



# TCIRG1 Recombinant Matched Antibody Pair, PBS Only

Catalog Number:MP00365-4

## Capture Antibody Information

**Catalog Number:**  
83351-3-PBS  
**Host:**  
Rabbit  
**Isotype:**  
IgG  
**Purification Method:**  
Protein A purification

**Clone ID:**  
240166E11  
**Reactivity:**  
human  
**GenBank:**  
BC018133  
**Immunogen Catalog Number:**  
Ag3378

**Conjugate:**  
Unconjugated  
**Full name:**  
T-cell, immune regulator 1, ATPase, H<sup>+</sup> transporting, lysosomal VO subunit A3  
**Gene ID:**  
10312

## Detection Antibody Information

**Catalog Number:**  
83351-7-PBS  
**Host:**  
Rabbit  
**Isotype:**  
IgG  
**Purification Method:**  
Protein A purification

**Clone ID:**  
240166E12  
**Reactivity:**  
human  
**GenBank:**  
BC018133  
**Immunogen Catalog Number:**  
Ag3378

**Conjugate:**  
Unconjugated  
**Full name:**  
T-cell, immune regulator 1, ATPase, H<sup>+</sup> transporting, lysosomal VO subunit A3  
**Gene ID:**  
10312

## Applications

**Tested Applications:**  
Sandwich ELISA

**Range:**  
0.313-20 ng/mL (Sandwich ELISA)

**Recommended Dilutions:**  
It is recommended that this reagent should be titrated in each testing system to obtain optimal results.

## Product Information

MP00365-4 targets TCIRG1 in immunoassays as a matched antibody pair. Validated in Sandwich ELISA.

Capture antibody: TCIRG1 Recombinant antibody, PBS Only (Capture) 83351-3-PBS (240166E11). 100 µg. Concentration 1 mg/ml.

Detection antibody: TCIRG1 Recombinant antibody, PBS Only (Detector) 83351-7-PBS (240166E12). 100 µg. Concentration 1 mg/ml.

Alternative TCIRG1 matched antibody pairs: MP00365-1, MP00365-2, MP00365-3

Unconjugated rabbit recombinant monoclonal antibody pair in PBS only storage buffer at a concentration of 1 mg/mL, ready for conjugation. Created using Proteintech's proprietary in-house recombinant technology. Recombinant production enables unrivalled batch-to-batch consistency, easy scale-up, and future security of supply.

Matched antibody pairs are designed for use in a variety of assays and platforms that require matched antibody pairs.

Antibody use should be optimized for each application and assay.

## Storage

**Storage:**  
Store at -80°C.  
**The product is shipped with ice packs. Upon receipt, store it immediately at -80°C**  
**Storage buffer:**  
PBS only

For technical support and original validation data for this product please contact:

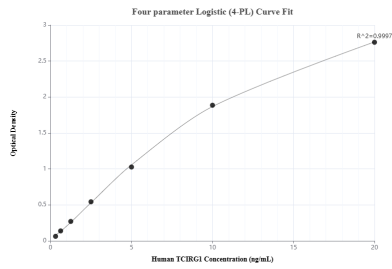
T: 4006900926

E: [Proteintech-CN@ptglab.com](mailto:Proteintech-CN@ptglab.com)

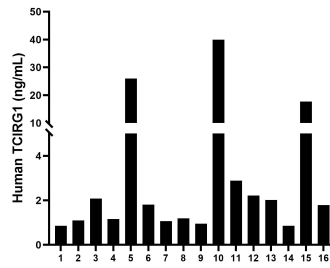
W: [ptgcn.com](http://ptgcn.com)

**This product is exclusively available under Proteintech Group brand and is not available to purchase from any other manufacturer.**

## Selected Validation Data



Sandwich ELISA standard curve of MP00365-4, Human TCIRG1 Recombinant Matched Antibody Pair - PBS only. 83351-3-PBS was coated to a plate as the capture antibody and incubated with serial dilutions of standard Ag3378. 83351-7-PBS was HRP conjugated as the detection antibody. Range: 0.313-20 ng/mL



Serum of sixteen individual healthy human donors was measured. The human TCIRG1 concentration of detected samples was determined to be 6.50 ng/mL with a range of 0.86 - 39.96 ng/mL.