

For Research Use Only

CRIP1 Recombinant Matched Antibody Pair, PBS Only



Catalog Number:MP00382-3

Capture Antibody Information

Catalog Number:
83340-4-PBS

Host:
Rabbit

Isotype:
IgG

Purification Method:
Protein A purification

Clone ID:
240176D8

Reactivity:
human

GenBank:
BC002738

Immunogen Catalog Number:
Ag7588

Conjugate:
Unconjugated

Full name:
cysteine-rich protein 1 (intestinal)

Gene ID:
1396

Detection Antibody Information

Catalog Number:
83340-3-PBS

Host:
Rabbit

Isotype:
IgG

Purification Method:
Protein A purification

Clone ID:
240176G2

Reactivity:
human, mouse

GenBank:
BC002738

Immunogen Catalog Number:
Ag7588

Conjugate:
Unconjugated

Full name:
cysteine-rich protein 1 (intestinal)

Gene ID:
1396

Applications

Tested Applications:
Sandwich ELISA

Range:
46.88-3000 pg/mL (Sandwich ELISA)

Recommended Dilutions:
It is recommended that this reagent should be titrated in each testing system to obtain optimal results.

Product Information

MP00382-3 targets CRIP1 in immunoassays as a matched antibody pair. Validated in Sandwich ELISA.

Capture antibody: CRIP1 Recombinant antibody, PBS Only (Capture) 83340-4-PBS (240176D8). 100 µg. Concentration 1 mg/ml.

Detection antibody: CRIP1 Recombinant antibody, PBS Only (Capture/Detector) 83340-3-PBS (240176G2). 100 µg. Concentration 1 mg/ml.

Alternative CRIP1 matched antibody pairs: MP00382-1, MP00382-2

Unconjugated rabbit recombinant monoclonal antibody pair in PBS only storage buffer at a concentration of 1 mg/mL, ready for conjugation. Created using Proteintech's proprietary in-house recombinant technology. Recombinant production enables unrivalled batch-to-batch consistency, easy scale-up, and future security of supply.

Matched antibody pairs are designed for use in a variety of assays and platforms that require matched antibody pairs.

Antibody use should be optimized for each application and assay.

Storage

Storage:

Store at -80°C.

The product is shipped with ice packs. Upon receipt, store it immediately at -80°C

Storage buffer:

PBS only

For technical support and original validation data for this product please contact:

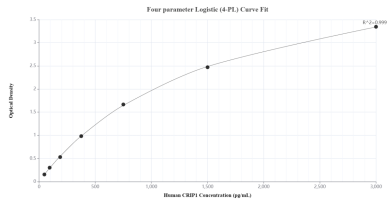
T: 4006900926

E: Proteintech-CN@ptglab.com

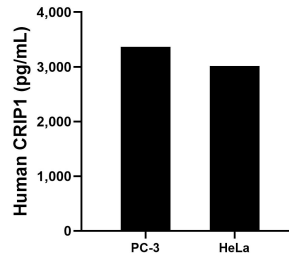
W: ptgcn.com

This product is exclusively available under Proteintech Group brand and is not available to purchase from any other manufacturer.

Selected Validation Data



Sandwich ELISA standard curve of MP00382-3, Human CRIP1 Recombinant Matched Antibody Pair - PBS only. 83340-4-PBS was coated to a plate as the capture antibody and incubated with serial dilutions of standard Ag7588. 83340-3-PBS was HRP conjugated as the detection antibody. Range: 46.88-3000 pg/mL



The mean CRIP1 concentration was determined to be 3,364.0 pg/mL in PC-3 cell extract based on a 3.0 mg/mL extract load and 3,015.0 pg/mL in HeLa cell extract based on a 3.0 mg/mL extract load.