

For Research Use Only

Rat MCP-1/CCL2 Recombinant Matched Antibody Pair, PBS Only



Catalog Number:MP00390-3

Capture Antibody Information

Catalog Number:

83370-4-PBS

Host:

Rabbit

Isotype:

IgG

Purification Method:

Protein A purification

Clone ID:

240341C1

Reactivity:

rat

GenBank:

NM_031530

Conjugate:

Unconjugated

Full name:

chemokine (C-C motif) ligand 2

Gene ID:

24770

Detection Antibody Information

Catalog Number:

83370-2-PBS

Host:

Rabbit

Isotype:

IgG

Purification Method:

Protein A purification

Clone ID:

240341G3

Reactivity:

rat

GenBank:

NM_031530

Conjugate:

Unconjugated

Full name:

chemokine (C-C motif) ligand 2

Gene ID:

24770

Applications

Tested Applications:

Sandwich ELISA

Range:

78.1-5000 pg/mL (Sandwich ELISA)

Recommended Dilutions:

It is recommended that this reagent should be titrated in each testing system to obtain optimal results.

Product Information

MP00390-3 targets MCP-1/CCL2 in immunoassays as a matched antibody pair. Validated in Sandwich ELISA.

Capture antibody: Rat MCP-1/CCL2 Recombinant antibody, PBS Only (Capture) 83370-4-PBS (240341C1). 100 µg. Concentration 1 mg/ml.

Detection antibody: Rat MCP-1/CCL2 Recombinant antibody, PBS Only (Detector) 83370-2-PBS (240341G3). 100 µg. Concentration 1 mg/ml.

Alternative MCP-1/CCL2 matched antibody pairs: MP00168-1, MP00168-2, MP00168-3, MP00168-4, MP00390-1, MP00390-2, MP00938-1, MP00938-2, MP00938-3

Unconjugated rabbit recombinant monoclonal antibody pair in PBS only storage buffer at a concentration of 1 mg/mL, ready for conjugation. Created using Proteintech's proprietary in-house recombinant technology. Recombinant production enables unrivalled batch-to-batch consistency, easy scale-up, and future security of supply.

Matched antibody pairs are designed for use in a variety of assays and platforms that require matched antibody pairs.

Antibody use should be optimized for each application and assay.

Storage

Storage:

Store at -80°C.

The product is shipped with ice packs. Upon receipt, store it immediately at -80°C

Storage buffer:

PBS only

For technical support and original validation data for this product please contact:

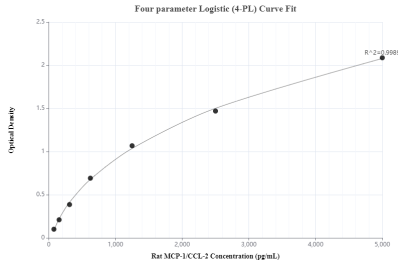
T: 4006900926

E: Proteintech-CN@ptglab.com

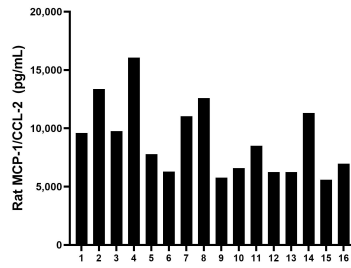
W: ptgcn.com

This product is exclusively available under Proteintech Group brand and is not available to purchase from any other manufacturer.

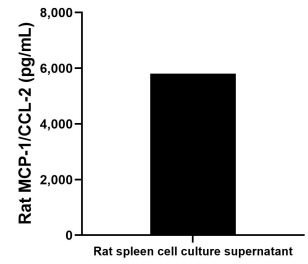
Selected Validation Data



Sandwich ELISA standard curve of MP00390-3, rat MCP-1/CCL-2 Recombinant Matched Antibody Pair - PBS only. 83370-4-PBS was coated to a plate as the capture antibody and incubated with serial dilutions of standard: Eg0397. 83370-2-PBS was HRP conjugated as the detection antibody. Range: 78.1-5000 pg/mL.



Serum of sixteen rat donors was measured. The MCP-1/CCL-2 concentration of detected samples was determined to be 8,981.3 pg/mL with a range of 5,770.2 - 16,068.9 pg/mL.



Rat spleen cell cultures (1/2 spleen; 1-2 mm pieces in 50 mL DMEM supplemented with 10% fetal bovine serum, containing 100 ng/mL LPS) were collected after culturing for 3 days in a CO₂-enriched (9.5%) incubator. The cell culture supernatant was assayed for rat MCP-1/CCL2 and measured 5,804.62 pg/mL.