

For Research Use Only

Mouse CD45/PTPRC Recombinant Matched Antibody Pair, PBS Only



Catalog Number:MP00412-2

Capture Antibody Information

Catalog Number:
83396-4-PBS

Host:
Rabbit

Isotype:
IgG

Purification Method:
Protein A purification

Clone ID:
240356C5

Reactivity:
Mouse

GenBank:
NM_001111316.2

Conjugate:
Unconjugated

Full name:
protein tyrosine phosphatase,
receptor type, C

Gene ID:
19264

Detection Antibody Information

Catalog Number:
83396-1-PBS

Host:
Rabbit

Isotype:
IgG

Purification Method:
Protein A purification

Clone ID:
240356C11

Reactivity:
Mouse

GenBank:
NM_001111316.2

Conjugate:
Unconjugated

Full name:
protein tyrosine phosphatase,
receptor type, C

Gene ID:
19264

Applications

Tested Applications:
Cytometric bead array

Range:
1.25-40 ng/mL (Cytometric Bead
Array)

Recommended Dilutions:
It is recommended that this reagent
should be titrated in each testing
system to obtain optimal results.

Product Information

MP00412-2 targets CD45/PTPRC in immunoassays as a matched antibody pair. Validated in Cytometric bead array.

Capture antibody: Mouse CD45/PTPRC Recombinant antibody, PBS Only (Capture/Detector) 83396-4-PBS (240356C5). 100 μ g. Concentration 1 mg/ml.

Detection antibody: Mouse CD45/PTPRC Recombinant antibody, PBS Only (Detector) 83396-1-PBS (240356C11). 100 μ g. Concentration 1 mg/ml.

Alternative CD45/PTPRC matched antibody pairs: MP00412-1, MP00412-3

Unconjugated rabbit recombinant monoclonal antibody pair in PBS only storage buffer at a concentration of 1 mg/mL, ready for conjugation. Created using Proteintech's proprietary in-house recombinant technology. Recombinant production enables unrivalled batch-to-batch consistency, easy scale-up, and future security of supply.

Matched antibody pairs are designed for use in a variety of assays and platforms that require matched antibody pairs.

Antibody use should be optimized for each application and assay.

Storage

Storage:
Store at -80°C.
Storage buffer:
PBS only

For technical support and original validation data for this product please contact:

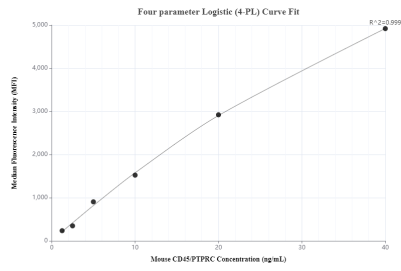
T: 4006900926

E: Proteintech-CN@ptglab.com

W: ptgcn.com

This product is exclusively available under Proteintech Group brand and is not available to purchase from any other manufacturer.

Selected Validation Data



Cytometric bead array standard curve of MP00412-2, MOUSE CD45/PTPRC Recombinant Matched Antibody Pair, PBS Only. Capture antibody: 83396-4-PBS. Detection antibody: 83396-1-PBS. Standard: Eg0845. Range: 1.25-40 ng/mL