

ESR2 Recombinant Matched Antibody Pair, PBS Only

Catalog Number:MP00441-3

Capture Antibody Information

Catalog Number:
83447-4-PBS
Host:
Rabbit
Isotype:
IgG
Purification Method:
Protein A purification

Clone ID:
240412D5
Reactivity:
human
GenBank:
BC024181
Immunogen Catalog Number:
Ag5103

Conjugate:
Unconjugated
Full name:
estrogen receptor 2 (ER beta)
Gene ID:
2100

Detection Antibody Information

Catalog Number:
83447-2-PBS
Host:
Rabbit
Isotype:
IgG
Purification Method:
Protein A purification

Clone ID:
240412G9
Reactivity:
human
GenBank:
BC024181
Immunogen Catalog Number:
Ag5103

Conjugate:
Unconjugated
Full name:
estrogen receptor 2 (ER beta)
Gene ID:
2100

Applications

Tested Applications:
Sandwich ELISA

Range:
1.56-100 ng/mL (Sandwich ELISA)

Recommended Dilutions:
It is recommended that this reagent should be titrated in each testing system to obtain optimal results.

Product Information

MP00441-3 targets ESR2 in immunoassays as a matched antibody pair. Validated in Sandwich ELISA.

Capture antibody: ESR2 Recombinant antibody, PBS Only (Capture) 83447-4-PBS (240412D5). 100 µg. Concentration 1 mg/ml.

Detection antibody: ESR2 Recombinant antibody, PBS Only (Capture/Detector) 83447-2-PBS (240412G9). 100 µg. Concentration 1 mg/ml.

Alternative ESR2 matched antibody pairs: MP00441-1, MP00441-2

Unconjugated rabbit recombinant monoclonal antibody pair in PBS only storage buffer at a concentration of 1 mg/mL, ready for conjugation. Created using Proteintech's proprietary in-house recombinant technology. Recombinant production enables unrivalled batch-to-batch consistency, easy scale-up, and future security of supply.

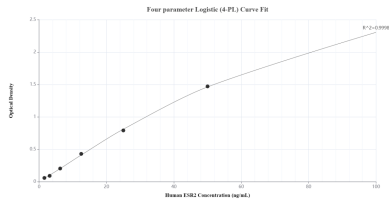
Matched antibody pairs are designed for use in a variety of assays and platforms that require matched antibody pairs.

Antibody use should be optimized for each application and assay.

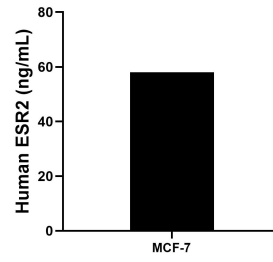
Storage

Storage:
Store at -80°C.
The product is shipped with ice packs. Upon receipt, store it immediately at -80°C
Storage buffer:
PBS only

Selected Validation Data



Sandwich ELISA standard curve of MP00441-3, Human ESR2 Recombinant Matched Antibody Pair - PBS only. 83447-4-PBS was coated to a plate as the capture antibody and incubated with serial dilutions of standard Ag5103. 83447-2-PBS was HRP conjugated as the detection antibody. Range: 1.56-100 ng/mL



The mean ESR2 concentration was determined to be 58.05 ng/mL in MCF-7 cell extract based on a 4.30 mg/mL extract load.