

For Research Use Only

Bcl-xL Recombinant Matched Antibody Pair, PBS Only



Catalog Number:MP00460-3

Capture Antibody Information

Catalog Number:
83330-4-PBS
Host:
Rabbit
Isotype:
IgG
Purification Method:
Protein A purification

Clone ID:
240450B1
Reactivity:
human
GenBank:
BC019307
Immunogen Catalog Number:
Ag25604

Conjugate:
Unconjugated
Full name:
BCL2-like 1
Gene ID:
598

Detection Antibody Information

Catalog Number:
83330-3-PBS
Host:
Rabbit
Isotype:
IgG
Purification Method:
Protein A purification

Clone ID:
240450F2
Reactivity:
human
GenBank:
BC019307
Immunogen Catalog Number:
Ag25604

Conjugate:
Unconjugated
Full name:
BCL2-like 1
Gene ID:
598

Applications

Tested Applications:
Sandwich ELISA

Range:
78.125-5000 pg/mL (Sandwich ELISA)

Recommended Dilutions:
It is recommended that this reagent should be titrated in each testing system to obtain optimal results.

Product Information

MP00460-3 targets Bcl-xL in immunoassays as a matched antibody pair. Validated in Sandwich ELISA.

Capture antibody: Bcl-xL Recombinant antibody, PBS Only (Capture) 83330-4-PBS (240450B1). 100 µg. Concentration 1 mg/ml.

Detection antibody: Bcl-xL Recombinant antibody, PBS Only (Detector) 83330-3-PBS (240450F2). 100 µg. Concentration 1 mg/ml.

Alternative Bcl-xL matched antibody pairs: MP00460-1, MP00460-2

Unconjugated rabbit recombinant monoclonal antibody pair in PBS only storage buffer at a concentration of 1 mg/mL, ready for conjugation. Created using Proteintech's proprietary in-house recombinant technology. Recombinant production enables unrivalled batch-to-batch consistency, easy scale-up, and future security of supply.

Matched antibody pairs are designed for use in a variety of assays and platforms that require matched antibody pairs.

Antibody use should be optimized for each application and assay.

Storage

Storage:
Store at -80°C.
The product is shipped with ice packs. Upon receipt, store it immediately at -80°C
Storage buffer:
PBS only

For technical support and original validation data for this product please contact:

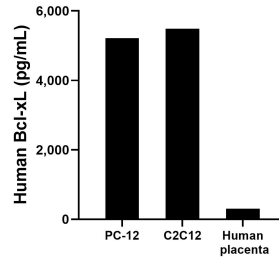
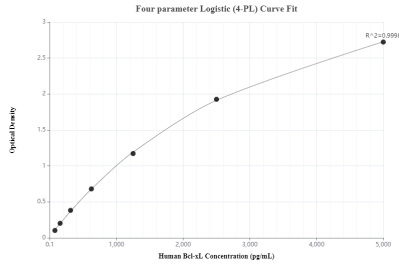
T: 4006900926

E: Proteintech-CN@ptglab.com

W: ptgcn.com

This product is exclusively available under Proteintech Group brand and is not available to purchase from any other manufacturer.

Selected Validation Data



Sandwich ELISA standard curve of MP00460-3, Human Bcl-xL Monoclonal Matched Antibody Pair - PBS only. 83330-4-PBS was coated to a plate as the capture antibody and incubated with serial dilutions of standard Ag25604. 83330-3-PBS was HRP conjugated as the detection antibody. Range: 78.125-5000 pg/mL.

The mean Bcl-xL concentration was determined to be 5217.7 pg/mL in PC-12 cell extract. The mean Bcl-xL concentration was determined to be 5,486.2 pg/mL in C2C12 cell extract based on a 3.6 mg/mL extract load. The mean Bcl-xL concentration was determined to be 303.5 pg/mL in human placenta cell extract based on a 1.8 mg/mL extract load.